

ព្រះរាជាណាចក្រកម្ពុជា  
KINGDOM OF CAMBODIA  
ជាតិ សាសនា ព្រះមហាក្សត្រ  
NATION RELIGION KING



ធនាគារជាតិ នៃ កម្ពុជា  
NATIONAL BANK OF CAMBODIA

ព័ត៌មានស្ថិតិសេដ្ឋកិច្ច និងរូបិយវត្ថុ  
ECONOMIC AND MONETARY STATISTICS

លេខ ៣៣៨- ឆ្នាំទី២៩  
ខែធ្នូ ឆ្នាំ២០២១  
SERIES No. 338-29<sup>th</sup> YEAR  
DECEMBER 2021

# Contents



Page

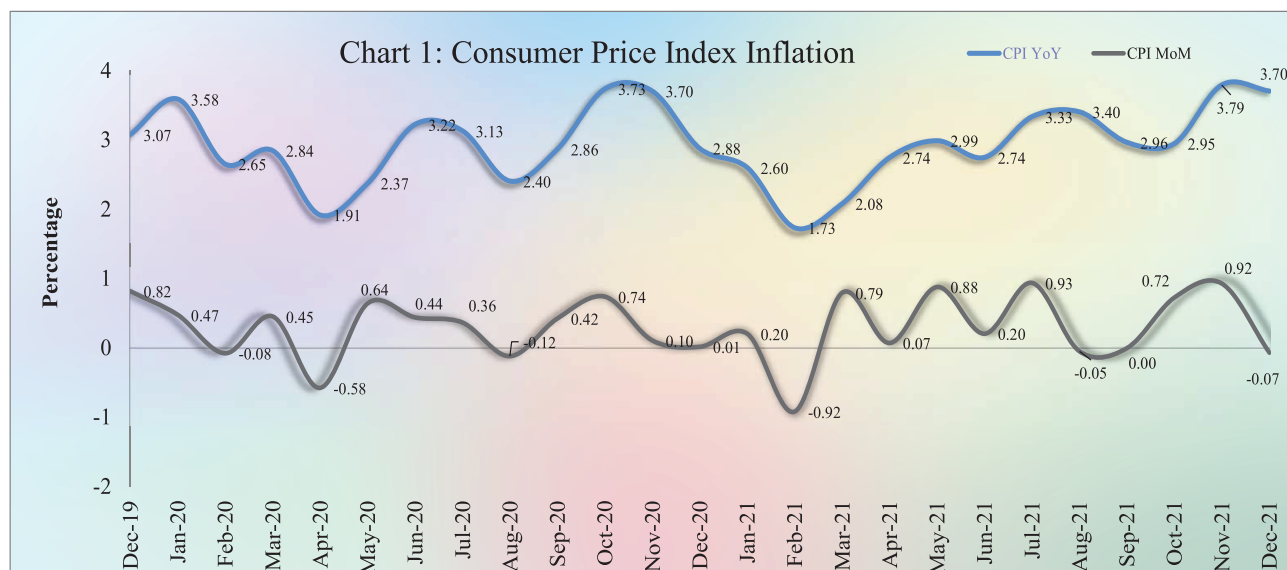
- Introduction.....	1
- Exchange Rate.....	1
- Money Supply.....	1
- Net Domestic Assets of the Depository Corporations.....	2
- Net Foreign Assets of the Depository Corporations .....	2
- Other Depository Corporations Survey.....	3
- Other Financial Corporations Survey.....	3
- Interest Rates on Loans and Deposits .....	3
- Foreign Tourist Arrivals.....	4
- International Trade in Goods .....	4
Table 1 : Consumer Price Index and Inflation Rate.....	6
Table 2 : Consumer Items Showing Price Decreased in December 2021.....	7
Chart 1 : Consumer Price Index.....	8
Chart 2 : Weight of All Group Indices in Consumer Basket .....	8
Table 3 : Gross Domestic Product .....	9
Chart 3 : GDP by Economic Activity (At Constant 2000 Prices).....	9
Chart 4 : GDP by Economic Activity (At Current Prices).....	9
Table 4 : Approved Investment Projects by Sectors .....	10
Chart 5 : Investment Fixed Assets by Sectors .....	10
Chart 6 : Numbers of Investment Projects by Sectors.....	10
Table 5 : Approved Investment Projects by Major Countries.....	11
Table 6 : Daily Exchange Rate in December 2021 (KHR/USD).....	12
Table 7 : Monthly Exchange Rate (KHR/USD, End-Period) .....	13
Chart 7 : Trend of Monthly Exchange Rate.....	13
Table 8 : The Value of KHR Against Other Currencies (Official Buying Rates, End-Period) .....	14
Table 9 : Deposit Money Bank's Interest Rates on Deposits and Loans in KHR.....	15
Table 10: Central Bank Survey.....	16
Table 11: Other Depository Corporations Survey .....	17
Table 12: Depository Corporations Survey .....	18
Table 13: Other Financial Corporations Survey .....	19
Table 14: Financial Corporations Survey .....	20
Chart 8 : Financial Corporations Survey .....	21
Chart 9 : Monetary Aggregates Components.....	21
Table 15: Credit Granted by Deposit Money Banks Classified by Industry.....	22
Chart 10: Credit Granted by Deposit Money Banks Classified by Industry.....	22
Table 16: Monthly Change of Credit Granted by Deposit Money Banks Classified by Industry.....	23
Table 17: Deposits with Deposit Money Banks.....	24
Chart 11: Deposits with Deposit Money Banks Classified by Currency, as of December 2021 (% of Total Deposits).....	24
Table 18: Monthly Change of Deposits with Deposit Money Banks .....	25
Chart 12: Deposits in KHR Classified by Type, as of December 2021 (% of Total KHR Deposits).....	26
Chart 13: Deposits in Foreign Currency Classified by Type, as of December 2021 (% of Total FCD).....	26
Table 19: Credit Granted by Micro-Finance Institutions and Non-Government Organizations.....	27
Table 20: KHR-Denominated Checks Clearing Through Clearing House .....	28
Table 21: USD-Denominated Checks Clearing Through Clearing House .....	29
Table 22: Visitor Arrivals in Cambodia.....	30
Table 23: Cambodia's Imports and Exports .....	31
Table 24: The Banking System in Cambodia .....	32-33

## Introduction

Headline consumer price inflation in December 2021 decelerated to negative level over the previous month, while the Khmer riel (KHR) depreciated against US dollar. During this period, credit to private sector and resident's deposit of the banking system continued to increase. In the meantime, international trade in goods showed an increase in deficit.

## Consumer Price Index

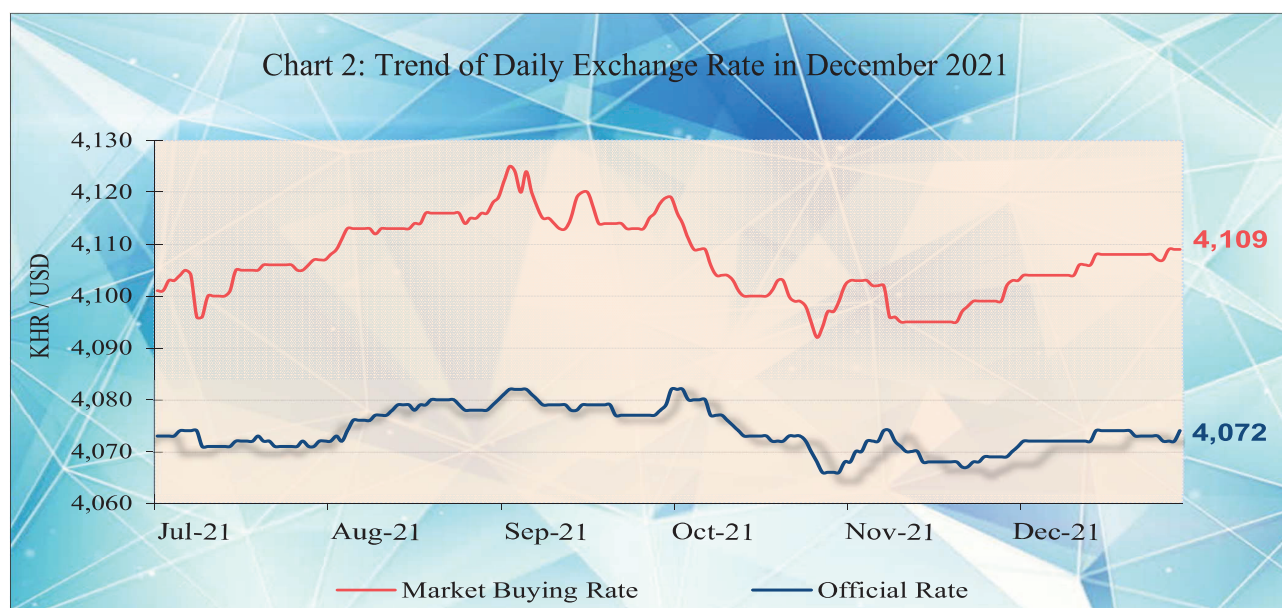
The consumer price inflation in Phnom Penh (month-on-month) decelerated to negative level of -0.07% in December from 0.92% in November 2021, in which three out of twelve group indexes decreased, while eight group indexes increased, and the other one group remained stable.



During the same period, the year-on-year percentage change of the CPI for all items eased to 3.7% in December from 3.79% in November 2021, which was mainly due to the lower hike in oil prices.

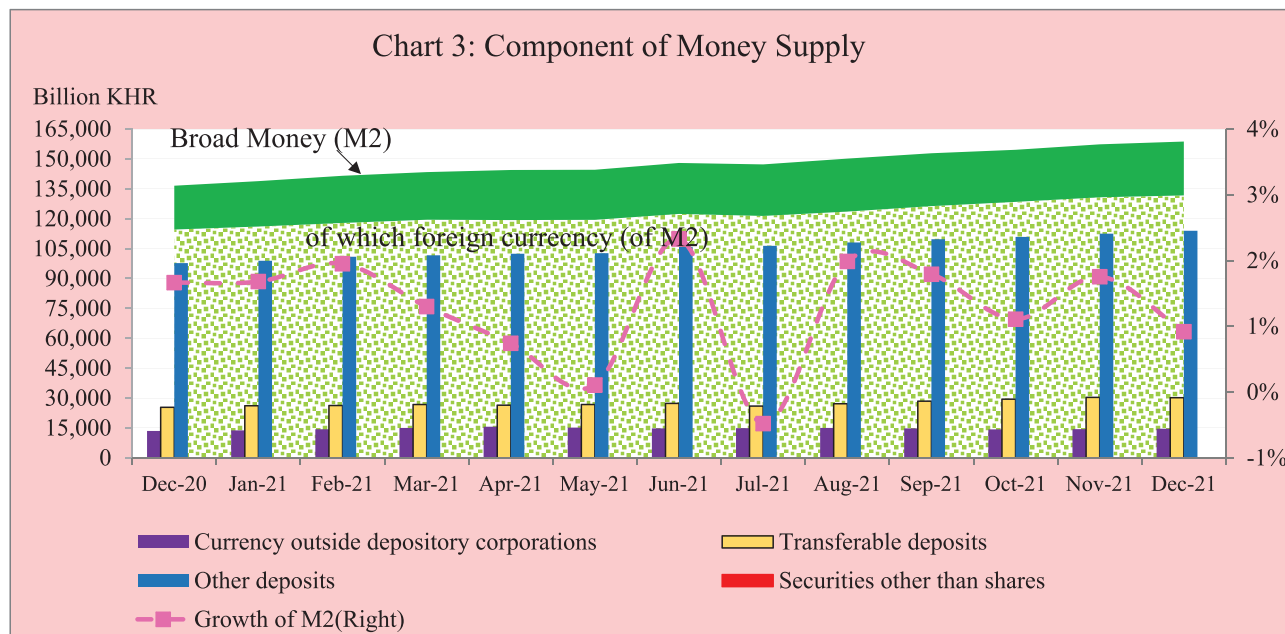
## Exchange Rate

The exchange rate (market buying rate) was KHR 4,109 per USD in December 2021, depreciated by 0.17% over November.



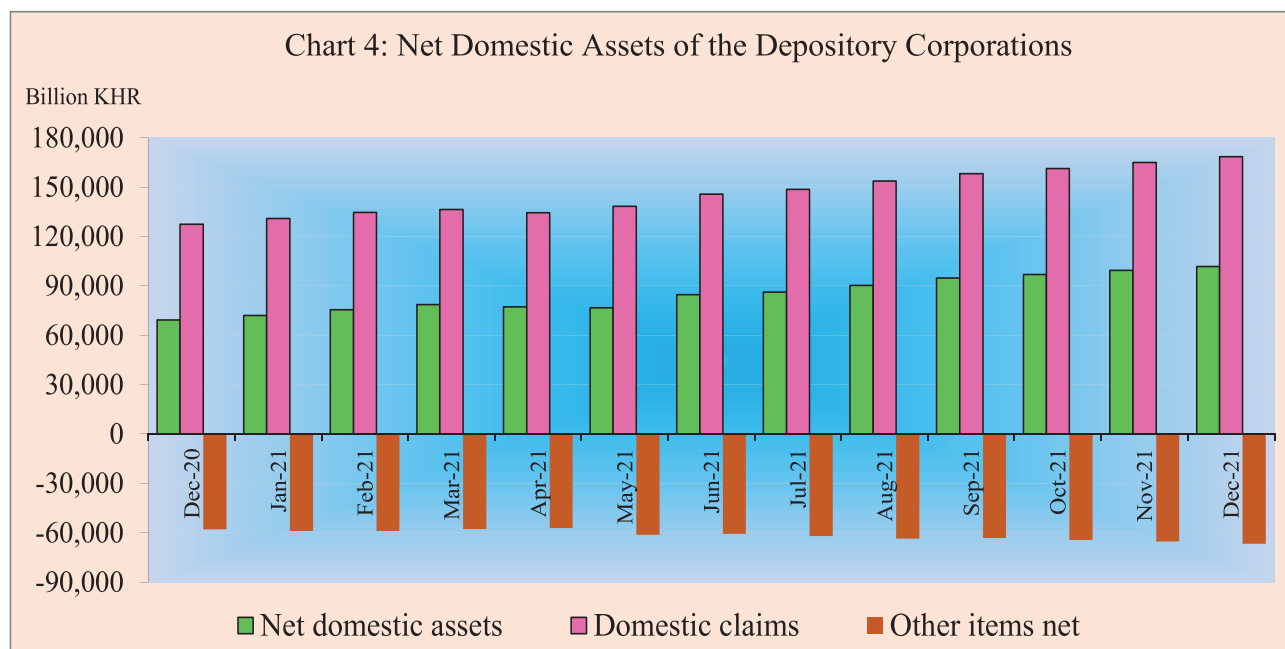
## Money Supply

Broad money (M2) increased to KHR 158,738.6 billion in December 2021, up by 0.9% compared to November. The main components of M2 showed that other deposits and currency outside depository corporations increased by 1.3% and 1.2%, respectively, while transferable deposits declined by 0.6%.



## Net Domestic Assets of the Depository Corporations

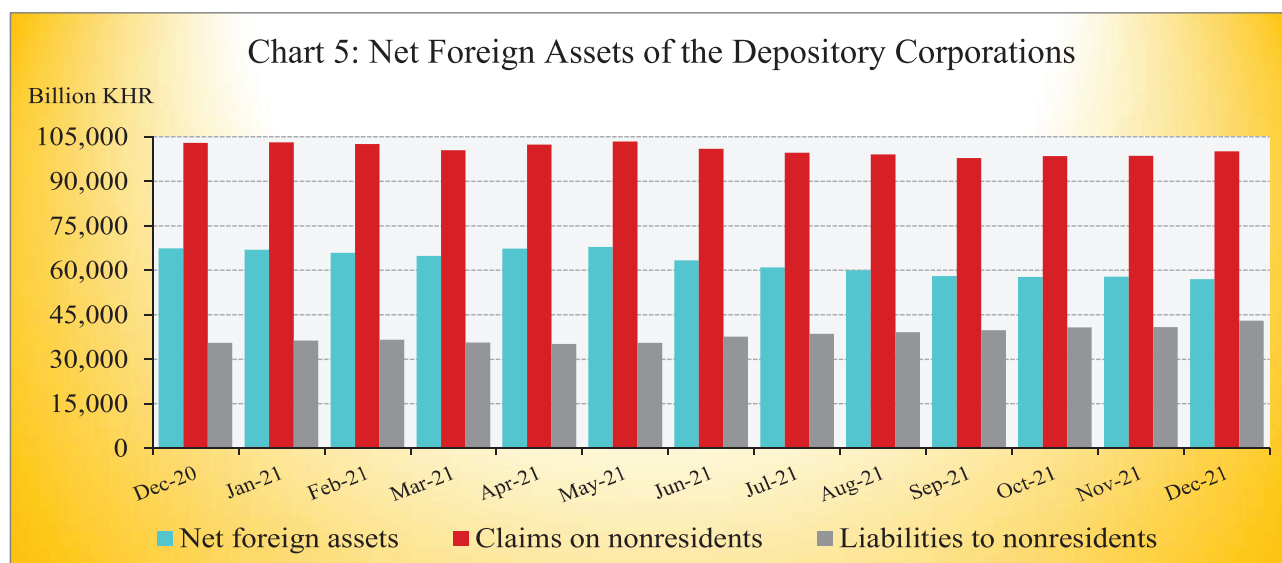
Net domestic assets of the depository corporations continued to increase to KHR 101,732.1 billion in December 2021, up by 2.3% compared to November. This was due to the increase of 2.2% in net domestic credit while other items net declined by 2%.



The increase in domestic credit was due to the increases of 2.3% and 2.2% in credit to other financial corporations and credit to private sector, respectively, while net credit to nonfinancial public sector decreased by 2.6%. The decrease in other items net was due to a decrease of 6.7% in others along with an increase of 1.3% in capital accounts.

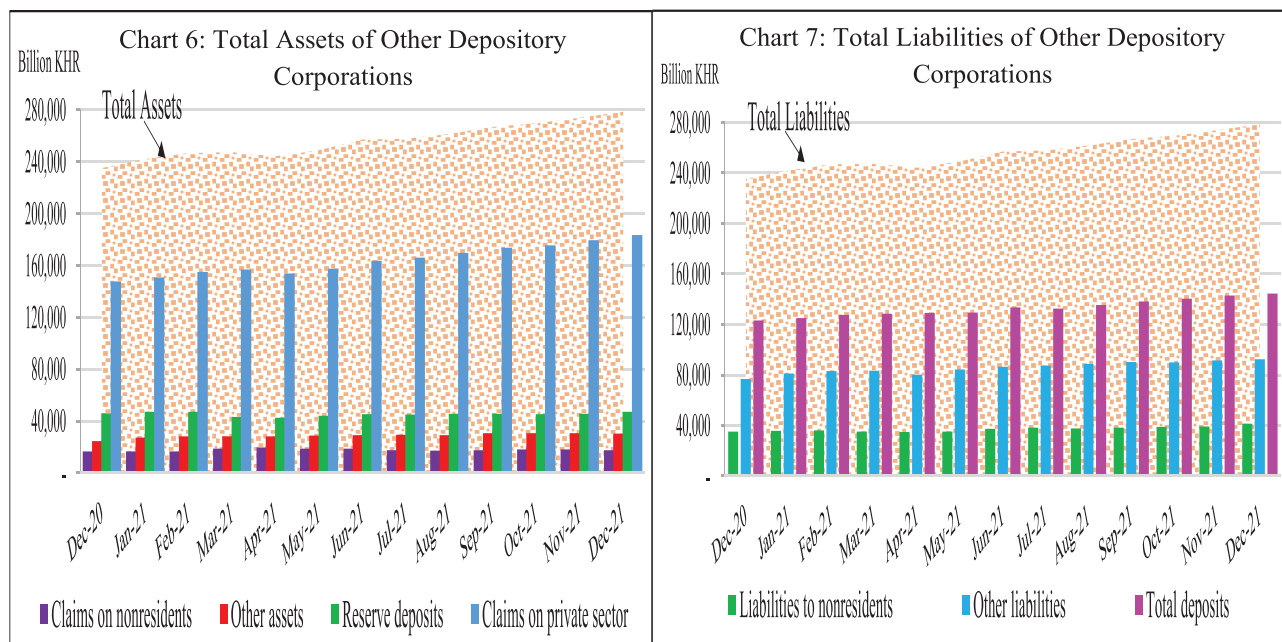
## Net Foreign Assets of the Depository Corporations

Net foreign assets of the depository corporation decreased to KHR 57,006.5 billion in December 2021, down by 1.4% from November. This was mainly due to a decrease of 2.8% in other foreign assets along with an increase of 5.6% in foreign liabilities, while gross foreign reserve increased only by 2.4%.



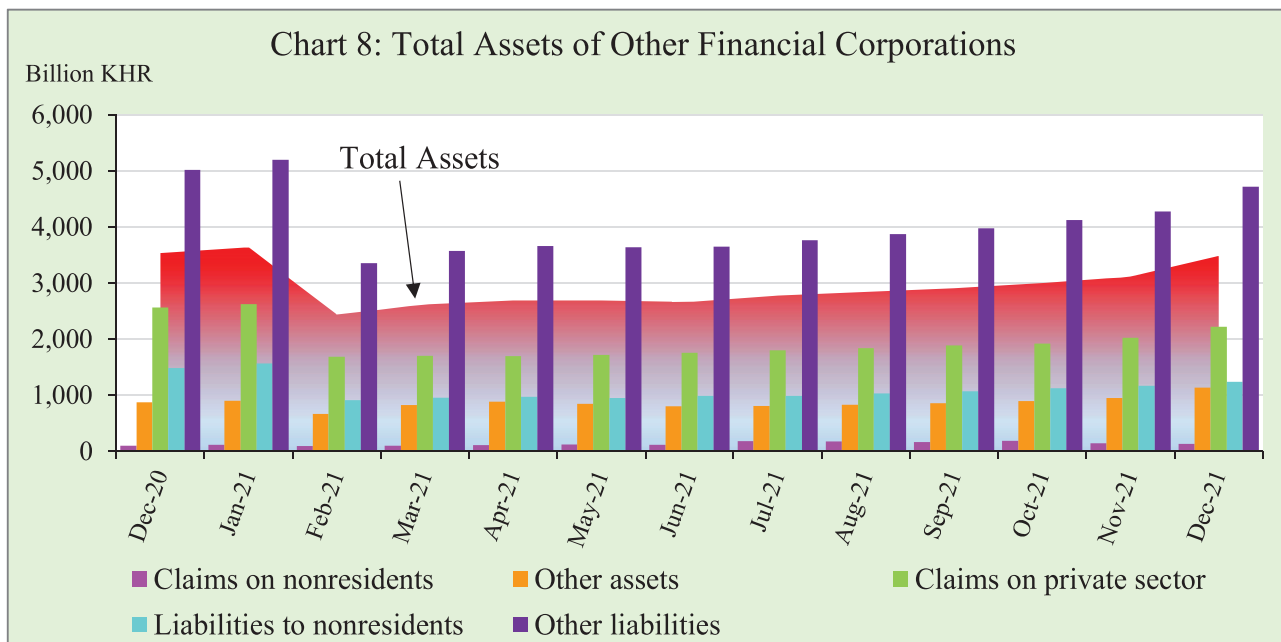
## Other Depository Corporations Survey

Total assets of other depository corporations (including commercial banks and microfinance deposit-taking institutions) were KHR 278,472.7 billion, increased by 1.7% in December 2021 compared to the previous month.



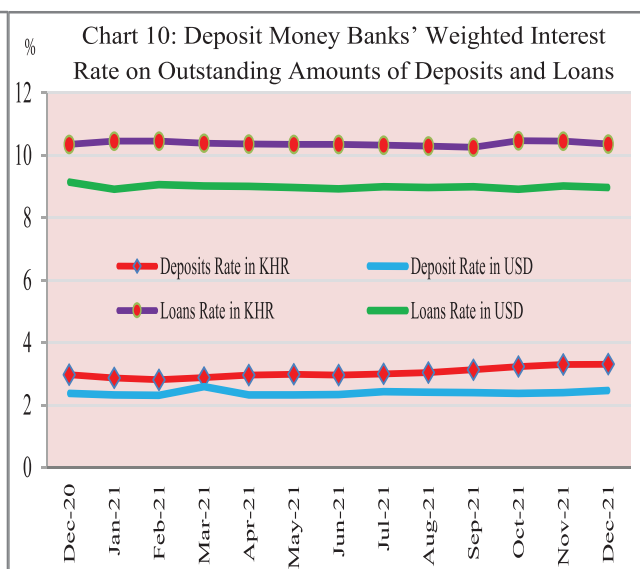
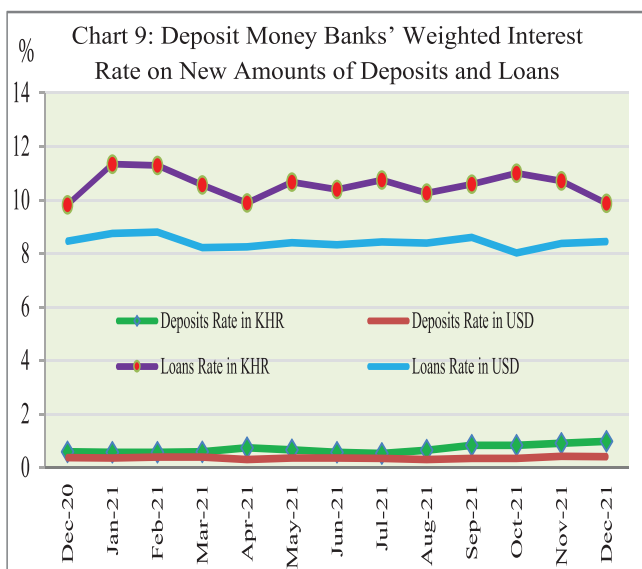
## Other Financial Corporations Survey

Total assets of other financial corporations were KHR 3,484 billion, up by 12% in December 2021 compared to November.



### Interest Rates on Deposits and Loans

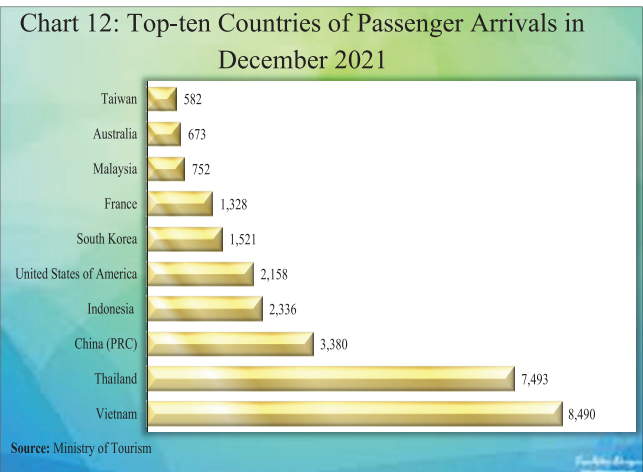
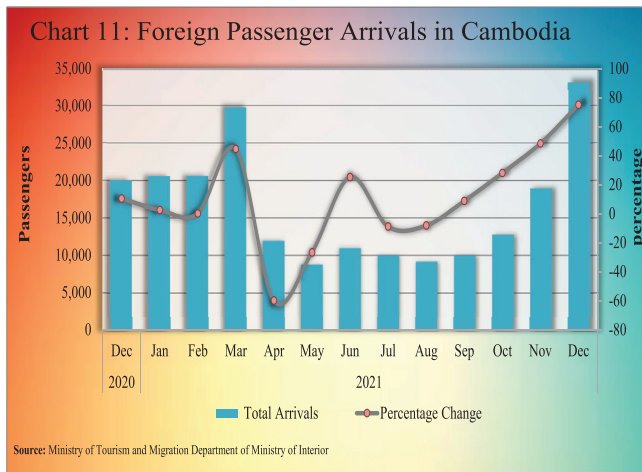
Interest rate on deposits and loans of banking sector in December 2021 showed that the (new amount) weighted average interest rate on deposit in KHR increased by 0.07% to 0.97%, while deposit in USD decreased by 0.01% to 0.40%. At the same time, the weighted average interest rate on loan in KHR decreased by 0.83% to 9.87%, while loan in USD increased by 0.07% to 8.44%.



### Foreign Tourist Arrivals

In December 2021, total number of passenger arrivals was 33,129, increased by 75% following the increase of 48.4% in the previous month. The main purposes of the passenger arrivals in Cambodia were for vacation, and business and professional, which were accounted for 58.3% and 33.7% of the total, respectively.

Most of the foreign passengers were from Vietnam, Thailand, China P.R.C., Indonesia, United States of America, South Korea, France, Malaysia, Australia, and Taiwan.

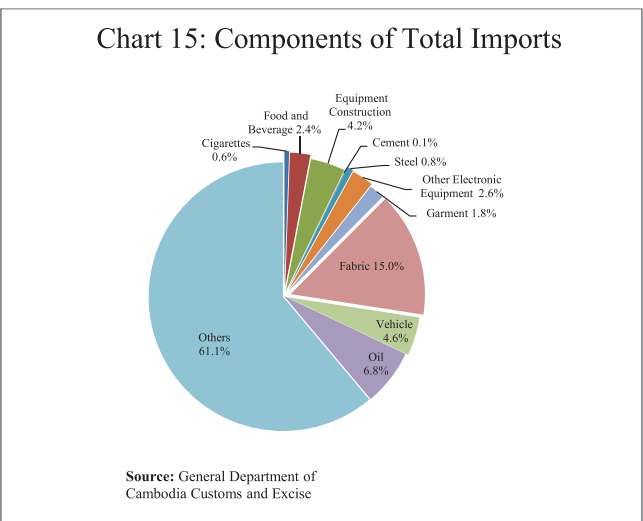
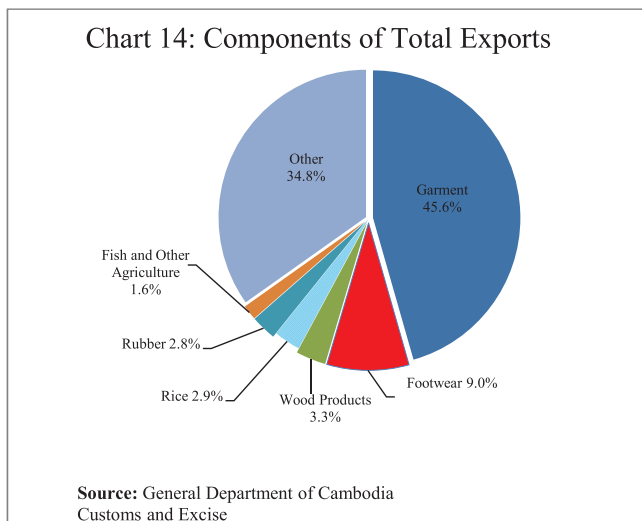


## International Trade in Goods

International trade in goods showed a deficit of KHR 5,901 billion (44%) in December 2021, following the deficit of KHR 3,701.5 billion (38.7%) in November.



The major components of total exports were Garment, Other Textile Product, Footwear, Electrical Part, Bicycle, Wood Products, Rice, Rubber, Fish and other agricultural Products, and Vehicle and Bicycle Part. In addition, the major components of total imports were Gold, Fabric, Oil, Medicine, Vehicle, Equipment Construction, Other Electronic Equipment, Food and Beverage, Garment, Steel, Cigarette, and Fertilizer.



**Table 1: Consumer Price Index and Inflation Rate**

<b>1. Consumer Price Index (CPI) and Component Indices</b> (Oct-Dec. 2006 = 100)	<b>Aug-21</b>	<b>Sep-21</b>	<b>Oct-21</b>	<b>Nov-21</b>	<b>Dec-21</b>
<b>CPI (all items)</b>	<b>189.00</b>	<b>189.00</b>	<b>190.36</b>	<b>192.12</b>	<b>191.98</b>
Food and Non-Alcoholic Beverages	234.26	233.92	234.98	236.25	236.65
Alcoholic Beverages, Tobacco and Narcotics	176.98	176.88	177.22	177.38	177.68
Clothing and Footwear	165.50	165.89	167.71	169.00	169.83
Housing, Water, Electricity, Gas and other Fuels	133.11	132.97	134.02	137.95	137.28
Furnishings and Household Maintenance	155.59	155.31	155.92	156.52	158.21
Health	139.76	139.62	140.32	140.85	140.85
Transport	119.13	119.60	122.38	124.62	121.40
Communication	66.43	66.52	66.51	66.56	66.47
Recreation and Culture	120.62	120.94	122.33	122.98	123.48
Education	164.91	164.91	165.90	165.90	167.18
Restaurants	299.31	301.29	304.05	306.12	307.41
Miscellaneous Goods and Services	162.25	161.73	163.45	164.40	164.89
<b>2. Percentage Change in the CPI and its Components</b>					
<b>2.1 Month on Month Change (%)</b>					
<b>CPI (all items)</b>	<b>-0.05</b>	<b>0.00</b>	<b>0.72</b>	<b>0.92</b>	<b>-0.07</b>
Food and Non-Alcoholic Beverages	0.19	-0.15	0.45	0.54	0.17
Alcoholic Beverages, Tobacco and Narcotics	-0.07	-0.06	0.19	0.09	0.17
Clothing and Footwear	0.80	0.23	1.10	0.77	0.49
Housing, Water, Electricity, Gas and other Fuels	0.10	-0.10	0.79	2.93	-0.48
Furnishings and Household Maintenance	0.11	-0.18	0.39	0.39	1.08
Health	-0.01	-0.10	0.50	0.37	0.00
Transport	-1.40	0.39	2.32	1.83	-2.58
Communication	-0.13	0.13	0.00	0.07	-0.14
Recreation and Culture	-0.40	0.27	1.15	0.53	0.41
Education	0.00	0.00	0.60	0.00	0.77
Restaurants	-0.87	0.66	0.92	0.68	0.42
Miscellaneous Goods and Services	0.14	-0.32	1.06	0.58	0.30
<b>2.2 Year on Year Change (%)</b>					
<b>CPI (all items)</b>	<b>3.40</b>	<b>2.96</b>	<b>2.95</b>	<b>3.79</b>	<b>3.70</b>
Food and Non-Alcoholic Beverages	3.50	2.57	2.03	2.45	2.78
Alcoholic Beverages, Tobacco and Narcotics	1.37	1.23	-0.26	-0.19	-0.07
Clothing and Footwear	5.97	5.80	6.19	6.58	6.49
Housing, Water, Electricity, Gas and other Fuels	2.87	2.57	3.03	6.22	5.64
Furnishings and Household Maintenance	1.72	1.29	1.15	1.83	2.96
Health	2.06	1.75	2.16	2.59	2.32
Transport	9.61	9.97	12.31	14.55	11.54
Communication	-0.28	0.15	0.01	0.21	-0.03
Recreation and Culture	0.08	-0.15	1.07	1.81	2.40
Education	-0.35	-0.35	0.25	0.25	1.03
Restaurants	0.33	1.62	1.85	1.93	1.77
Miscellaneous Goods and Services	4.82	4.38	5.06	5.42	5.15
<b>3. Three-month moving average CPI (All Items)</b>					
<b>Year on Year Change (%)</b>	<b>3.16</b>	<b>3.23</b>	<b>3.10</b>	<b>3.23</b>	<b>3.48</b>
<b>4. Twelve-month moving average CPI (All Items)</b>					
<b>Year on Year Change (%)</b>	<b>2.90</b>	<b>2.91</b>	<b>2.84</b>	<b>2.85</b>	<b>2.92</b>

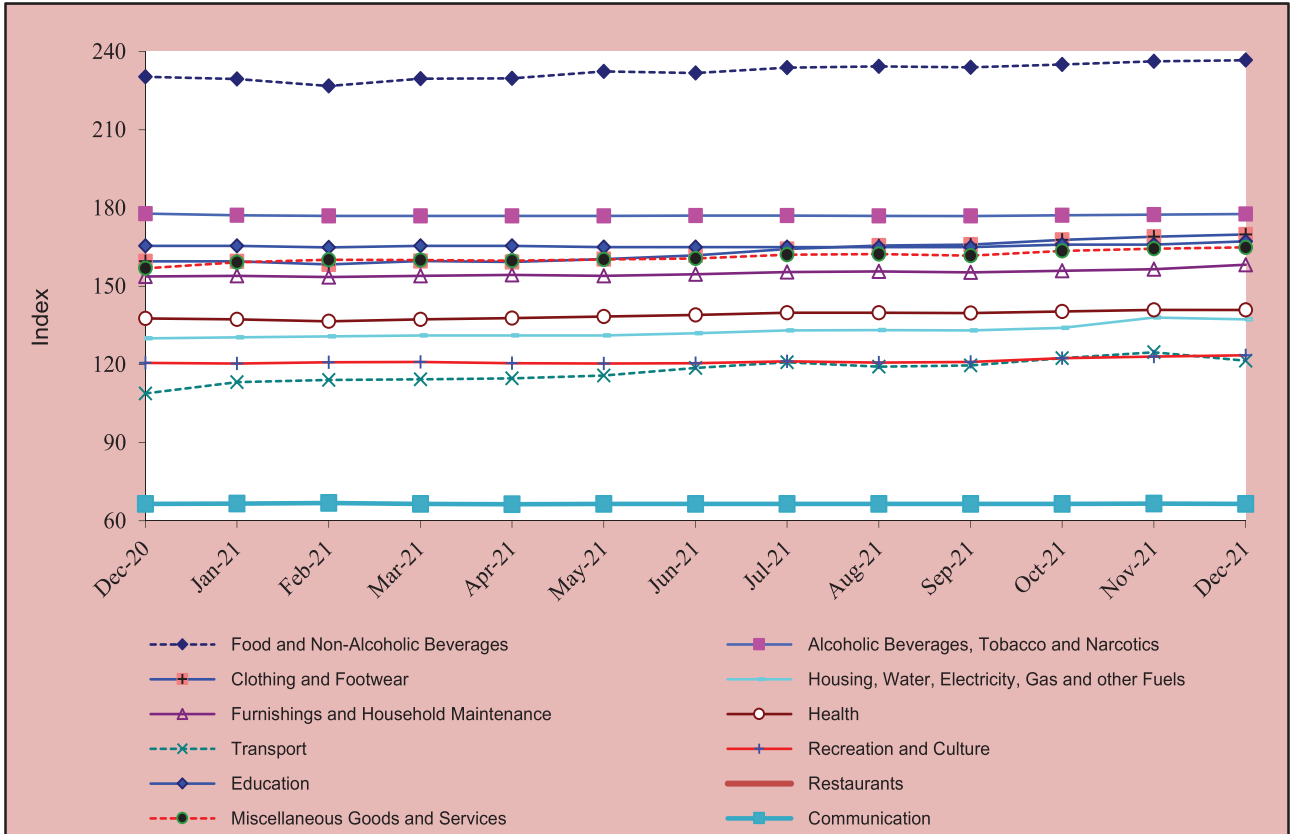
*Source: National Institute of Statistics*

**Table 2: Consumer Items Showing Price Decreased in December 2021**

No.	Description	Weight	Index			Percentage Change	
			Dec-20	Nov-21	Dec-21	Monthly	Yearly
1	GASOLINE	4.969	75.07	110.62	103.24	-6.7	37.5
2	DIESEL	0.144	83.23	127.12	120.99	-4.8	45.4
3	LIQUID FUELS	0.099	144.41	164.76	160.00	-2.9	10.8
4	GAS	2.699	123.33	156.30	153.40	-1.9	24.4
5	SOLID FUELS	1.475	237.68	255.79	251.57	-1.6	5.8
6	MAINTENANCE AND REPAIRS OF PERSONAL TRANSPORT EQUIPMENT	0.265	280.93	280.93	278.77	-0.8	-0.8
7	FOOD PRODUCTS NEC	1.404	235.36	243.12	241.32	-0.7	2.5
8	TRADITIONAL CAKES	0.561	227.51	226.12	224.82	-0.6	-1.2
9	TRANSPORT SERVICES	0.812	169.94	168.90	168.15	-0.4	-1.1
10	TUBERS AND MUSHROOMS	0.439	203.93	211.03	210.10	-0.4	3.0
11	BICYCLES	0.103	145.99	150.87	150.23	-0.4	2.9
12	MOTOR OIL	0.062	156.44	169.10	168.43	-0.4	7.7
13	TELEPHONE AND TELEFAX EQUIPMENT	0.725	47.25	47.36	47.22	-0.3	-0.1
14	PROCESSED EGGS	0.079	179.37	180.53	179.98	-0.3	0.3
15	GLASSWARE, TABLEWARE AND HOUSEHOLD UTENSILS	0.078	148.99	150.69	150.26	-0.3	0.9
16	INFANTS' CLOTHING (BELOW 1 YEAR)	0.054	143.19	144.50	144.09	-0.3	0.6
17	OTHER SERVICES N.E.C.	0.892	118.74	118.95	118.62	-0.3	-0.1
18	HOUSEHOLD APPLIANCES	0.397	120.31	122.81	122.49	-0.3	1.8
19	DRIED NUTS AND EDIBLE SEEDS	0.556	247.84	249.03	248.40	-0.3	0.2
20	FRESH EGGS	1.013	167.00	166.45	166.13	-0.2	-0.5
21	OILS AND FATS	0.920	223.87	228.42	228.13	-0.1	1.9
22	MOTOR CYCLES	2.736	130.90	133.47	133.30	-0.1	1.8
23	LEAF AND STALK VEGETABLES (FRESH)	2.031	220.60	230.98	230.74	-0.1	4.6
24	ROOT VEGETABLES	0.456	245.01	264.57	264.32	-0.1	7.9
25	NOODLES	1.008	232.01	237.95	237.85	0.0	2.5
26	FURNITURE AND FURNISHINGS, CARPETS AND OTHER FLOOR COVERINGS	0.626	229.17	235.09	235.03	0.0	2.6
27	MOTOR CARS	3.053	108.36	108.54	108.52	0.0	0.1
28	PULSES/LEGUMES	0.413	236.87	243.30	243.25	0.0	2.7
29	OTHER ARTICLES OF CLOTHING AND CLOTHING ACCESSORIES	0.059	150.45	153.70	153.67	0.0	2.1
30	SPARE PARTS AND ACCESSORIES FOR PERSONAL TRANSPORT EQUIPMENT	0.084	234.99	258.65	258.63	0.0	10.1
31	MINERAL WATERS, SOFT DRINKS, FRUIT AND VEGETABLE JUICES	0.748	145.23	145.23	145.23	0.0	0.0
32	CLEANING, REPAIR AND HIRE OF CLOTHING	0.040	146.30	146.30	146.30	0.0	0.0
33	ACTUAL RENTALS FOR HOUSING	1.054	100.00	100.00	100.00	0.0	0.0
34	SERVICES FOR THE MAINTENANCE AND REPAIR OF THE DWELLING	0.435	204.77	205.50	205.50	0.0	0.4
35	WATER SUPPLY AND MISCELLANEOUS SERVICES RELATED TO THE DWELLING	2.307	100.00	100.00	100.00	0.0	0.0
36	ELECTRICITY	5.352	102.16	102.16	102.16	0.0	0.0
37	OUTPATIENT SERVICES	1.141	126.03	126.03	126.03	0.0	0.0
38	HOSPITAL SERVICES	0.412	189.25	189.25	189.25	0.0	0.0
39	TELEPHONE AND TELEFAX SERVICES	0.411	100.42	100.42	100.42	0.0	0.0
40	FINANCIAL SERVICES N.E.C.	0.037	86.25	86.25	86.25	0.0	0.0

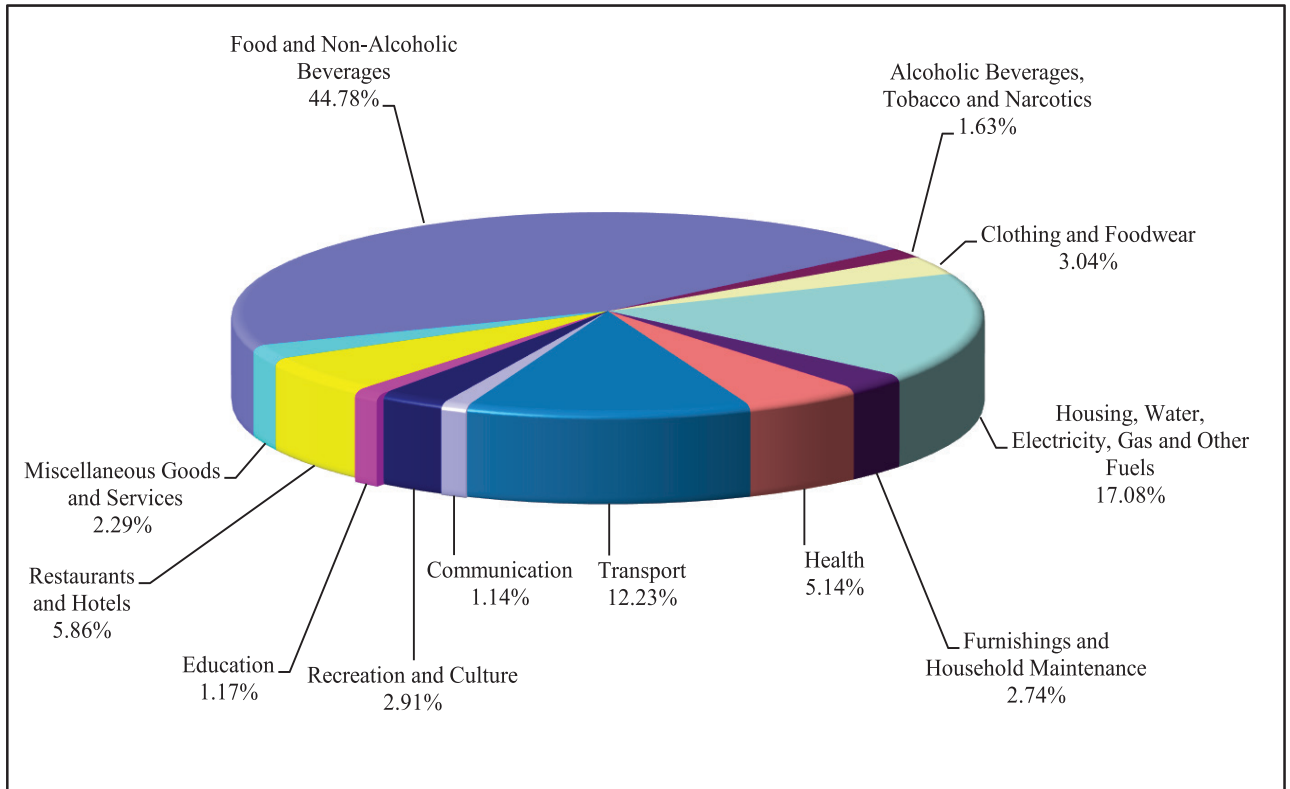
Source: National Institute of Statistics

**Chart 1: Consumer Price Index**



Source: National Institute of Statistics

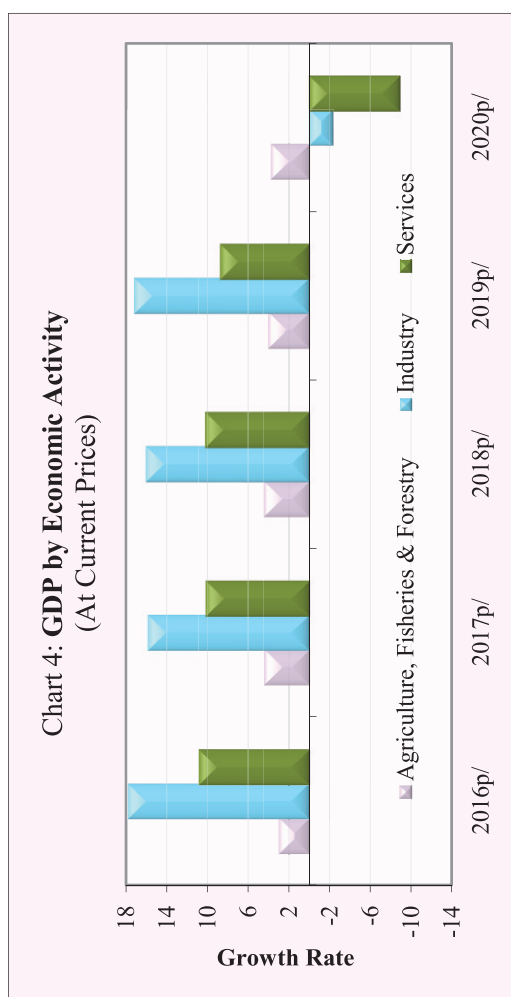
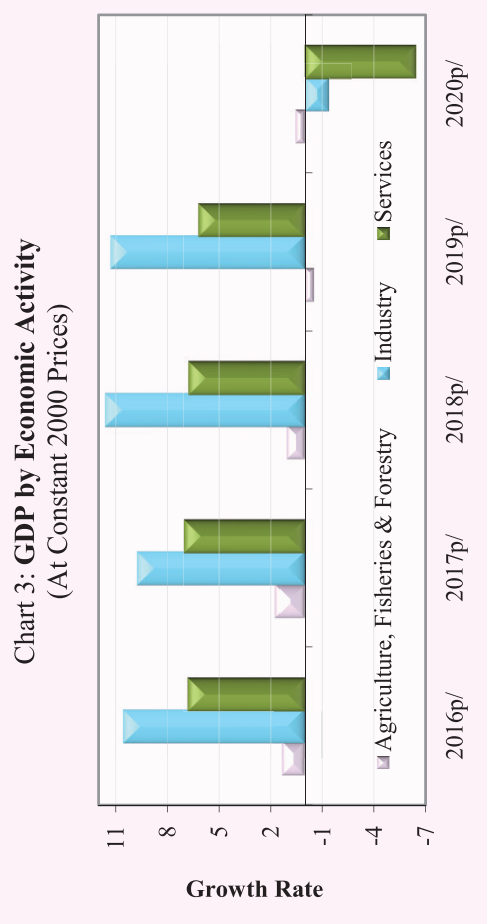
**Chart 2: Weight of All Group Indices in Consumer Basket**



Source: National Institute of Statistics

**Table 3: Gross Domestic Product (GDP)**

	At Constant 2000 Prices					At Current Prices				
	2016p/	2017p/	2018p/	2019p/	2020p/	2016p/	2017p/	2018p/	2019p/	2020p/
GDP in Billion KHR	45,961	49,177	52,850	56,578	54,807	81,242	89,831	99,544	110,014	105,857
GDP in Million USD	11,405	12,148	13,001	13,901	13,390	20,159	22,191	24,488	27,030	25,863
GDP % Growth Rate	6.9	7.0	7.5	7.1	-3.1	10.6	10.6	10.8	10.5	-3.8
GDP % Growth Rate, by Economic Activity										
<b>Agriculture, Fisheries &amp; Forestry</b>	<b>1.3</b>	<b>1.7</b>	<b>1.1</b>	<b>-0.5</b>	<b>0.6</b>	<b>3.0</b>	<b>4.4</b>	<b>4.4</b>	<b>4.0</b>	<b>3.7</b>
<b>Industry</b>	<b>10.6</b>	<b>9.7</b>	<b>11.6</b>	<b>11.3</b>	<b>-1.4</b>	<b>17.7</b>	<b>15.8</b>	<b>16.0</b>	<b>17.1</b>	<b>-2.4</b>
<b>Services</b>	<b>6.8</b>	<b>7.0</b>	<b>6.8</b>	<b>6.2</b>	<b>-6.5</b>	<b>10.8</b>	<b>10.1</b>	<b>10.2</b>	<b>8.7</b>	<b>-9.0</b>
GDP Per Capita in Million KHR	3.0	3.2	3.4	3.5	3.3	5.4	5.8	6.3	6.9	6.5
GDP Per Capita in USD	752	782	826	871	817	1,330	1,429	1,555	1,694	1,577



p/: preliminary estimates

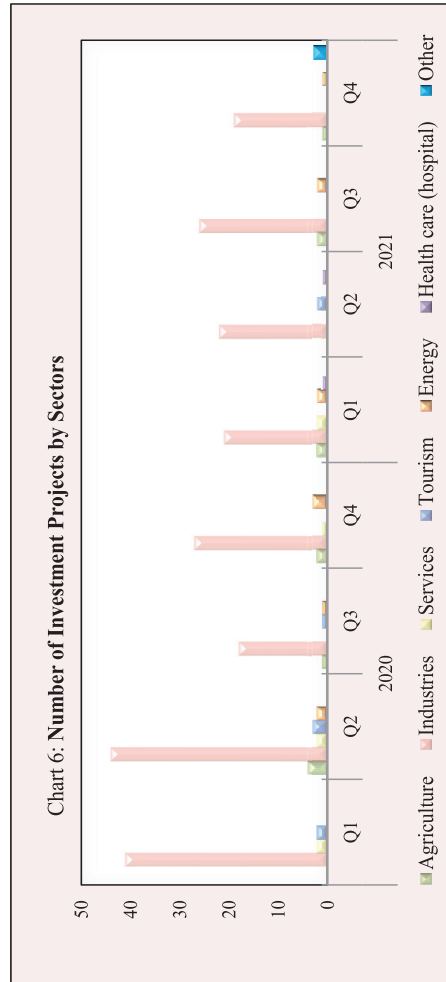
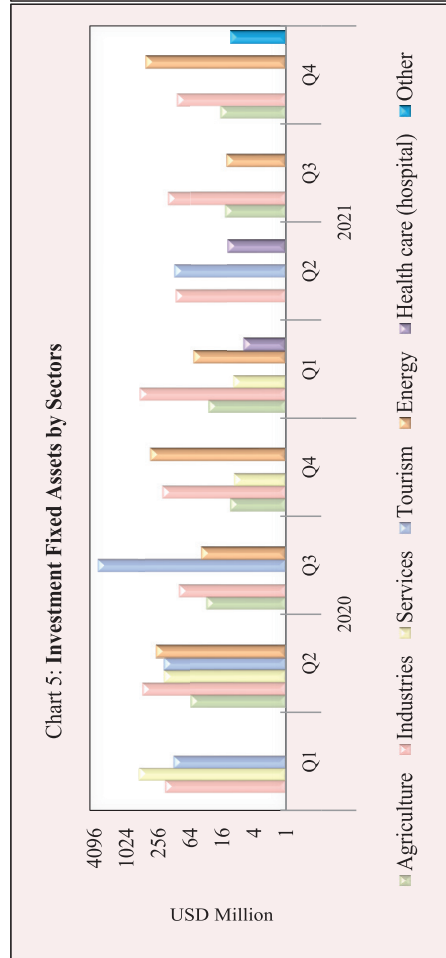
r/: revised

Source: National Institute of Statistics

**Table 4: Investment Projects Approved by Sectors**

(In Million USD)

Sector	Agriculture		Industries		Services		Tourism		Energy		Health care (hospital)		Other		Total	
	Projects	Fixed Assets	Projects	Fixed Assets	Projects	Fixed Assets	Projects	Fixed Assets	Projects	Fixed Assets	Projects	Fixed Assets	Projects	Fixed Assets	Projects	Fixed Assets
<b>2018</b>																
<b>Total</b>	13	444.2	115	984.0	10	2,869.9	12	1,577.8	-	-	-	-	-	-	150	5,875.8
<b>2019</b>																
<b>Q4</b>	2	27.5	38	198.5	4	361.4	4	1,703.7	2	100.4	-	-	-	-	50	2,391.6
<b>Total</b>	5	68.7	164	859.4	10	1028.3	17	6,051.6	3	158.6	-	-	-	-	199	8,166.6
<b>2020</b>																
<b>Q1</b>	-	-	41	191.0	2	592.1	2	133.0	-	-	-	-	-	-	45	916.1
<b>Q2</b>	4	62.5	44	509.0	2	198.1	3	202.4	2	282.1	-	-	-	-	55	1,254.1
<b>Q3</b>	1	31.7	18	109.3	-	-	1	3,515.1	1	39.9	-	-	-	-	21	3,695.9
<b>Q4</b>	2	11.4	27	221.6	1	9.6	-	-	3	356.8	-	-	-	-	33	599.4
<b>Total</b>	7	105.6	130	1030.9	5	799.8	6	3850.5	6	678.7	-	-	-	-	154	6,465.5
<b>2021</b>																
<b>Q1</b>	2	29.0	21	579.3	2	9.9	-	-	2	55.0	1	6.3	-	-	28	679.6
<b>Q2</b>	-	-	22	121.6	-	-	2	127.8	-	-	-	12.5	-	-	25	261.9
<b>Q3</b>	2	14.0	26	166.6	-	-	-	-	2	13.3	-	-	-	-	30	193.9
<b>Q4</b>	1	17.2	19	113.1	-	-	-	-	1	441.4	-	-	3	11.4	24	583.2
<b>Total</b>	5	60.3	88	980.6	2	9.9	2	127.8	5	509.7	2	18.8	3	11.4	107	1718.7



Source: Council for the Development of Cambodia (Cambodian Investment Board)

\* Revised data

**Table 5: Investment Projects Approved by Major Countries\***

(In Million USD)

Country	2020				2021			
	Q1	Q2	Q3	Q4	Q1	Q2	Q3	Q4
Cambodia	332.3	430.2	1,803.7	1,319.9	470.6	82.6	48.5	461.8
China	471.9	343.2	32.9	245.0	57.8	125.2	90.3	66.5
Korea	-	231.1	31.7	-	-	-	-	4.2
United States	18.6	14.8	-	-	-	-	-	21.0
Thailand	-	5.0	39.9	-	37.5	-	-	-
Vietnam	2.3	5.9	-	-	-	-	-	-
Malaysia	30.0	21.7	-	43.0	16.5	-	-	-
Singapore	-	45.2	2.7	-	1.9	-	-	5.7
Taiwan	20.8	27.1	20.7	38.7	9.9	41.6	45.5	-
Australia	-	-	-	-	-	-	-	-
England	-	2.0	-	-	-	-	-	-
Japan	7.2	-	-	-	-	-	-	-
Hong Kong	32.2	23.7	39.5	11.1	83.3	12.5	9.6	24.0
Others	0.8	104.0	1,724.9	5.6	2.1	-	-	-
<b>Total</b>	<b>916.1</b>	<b>1,254.1</b>	<b>3,695.9</b>	<b>1,663.4</b>	<b>679.6</b>	<b>261.9</b>	<b>193.9</b>	<b>583.2</b>
	<b>(Share of Total)</b>							
Cambodia	36.3	34.3	48.8	79.4	69.2	31.5	25.0	79.2
China	51.5	27.4	0.9	14.7	8.5	47.8	46.6	11.4
Korea	-	18.4	0.9	-	-	-	-	0.7
United States	2.0	1.2	-	-	-	-	-	3.6
Thailand	-	0.4	1.1	-	5.5	-	-	-
Vietnam	0.3	0.5	-	-	-	-	-	-
Malaysia	3.3	1.7	-	2.6	2.4	-	-	-
Singapore	-	3.6	0.1	-	0.3	-	-	1.0
Taiwan	2.3	2.2	0.6	2.3	1.4	15.9	23.5	-
Australia	-	-	-	-	-	-	-	-
England	-	0.2	-	-	-	-	-	-
Japan	0.8	-	-	-	-	-	-	-
Hong Kong	3.5	1.9	1.1	0.7	12.3	4.8	4.9	4.1
Others	0.1	8.3	46.7	0.3	0.3	-	-	-
<b>Total</b>	<b>100.0</b>	<b>100.0</b>	<b>100.0</b>	<b>100.0</b>	<b>100.0</b>	<b>100.0</b>	<b>100.0</b>	<b>100.0</b>

\* Fixed Assets

*Source: Council for the Development of Cambodia (Cambodian Investment Board)*

**Table 6: Daily Exchange Rate in December 2021**

(KHR/USD)

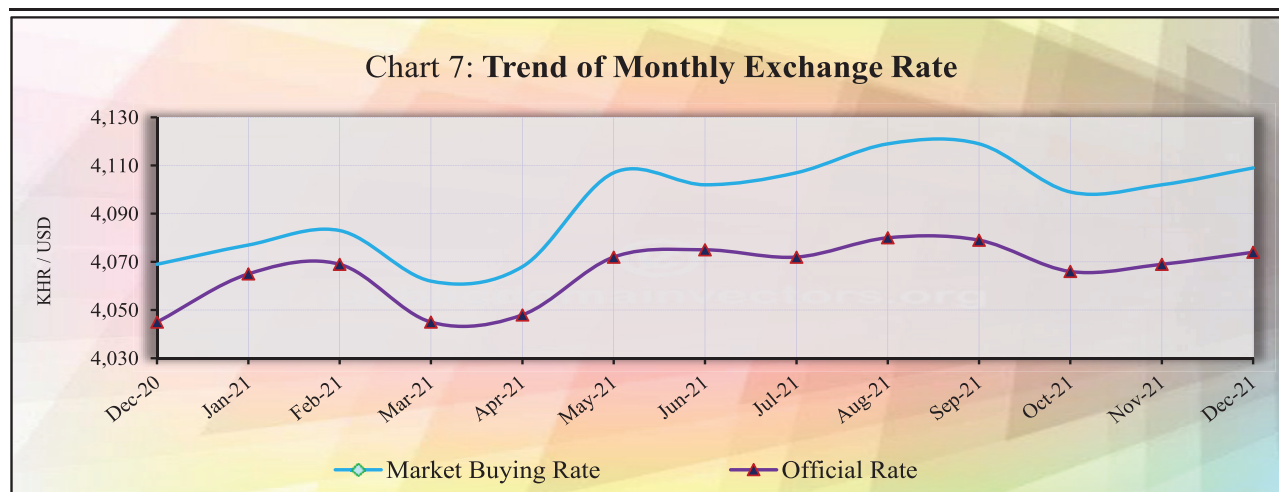
Day	Parallel Market Rate			Official Rate	Daily Change*	
	Purchase	Sale	Midpoint		Spread	% Change
1	4,103	4,114	4,109	4,070	1.0	0.0
2	4,103	4,114	4,109	4,071	0.0	0.0
3	4,104	4,115	4,110	4,072	1.0	0.0
4	4,104	4,115	4,110	4,072	0.0	0.0
5	4,104	4,115	4,110	4,072	0.0	0.0
6	4,104	4,115	4,110	4,072	0.0	0.0
7	4,104	4,115	4,110	4,072	0.0	0.0
8	4,104	4,115	4,110	4,072	0.0	0.0
9	4,104	4,115	4,110	4,072	0.0	0.0
10	4,104	4,115	4,110	4,072	0.0	0.0
11	4,104	4,115	4,110	4,072	0.0	0.0
12	4,104	4,115	4,110	4,072	0.0	0.0
13	4,106	4,116	4,111	4,072	2.0	0.0
14	4,106	4,116	4,111	4,072	0.0	0.0
15	4,106	4,116	4,111	4,072	0.0	0.0
16	4,108	4,118	4,113	4,074	2.0	0.0
17	4,108	4,118	4,113	4,074	0.0	0.0
18	4,108	4,118	4,113	4,074	0.0	0.0
19	4,108	4,118	4,113	4,074	0.0	0.0
20	4,108	4,118	4,113	4,074	0.0	0.0
21	4,108	4,117	4,113	4,074	0.0	0.0
22	4,108	4,117	4,113	4,074	0.0	0.0
23	4,108	4,117	4,113	4,073	0.0	0.0
24	4,108	4,117	4,113	4,073	0.0	0.0
25	4,108	4,117	4,113	4,073	0.0	0.0
26	4,108	4,117	4,113	4,073	0.0	0.0
27	4,107	4,117	4,112	4,073	-1.0	0.0
28	4,107	4,117	4,112	4,072	0.0	0.0
29	4,109	4,118	4,114	4,072	2.0	0.0
30	4,109	4,118	4,114	4,072	0.0	0.0
31	4,109	4,118	4,114	4,074	0.0	0.0
<b>Average Rate</b>	<b>4,106</b>	<b>4,116</b>	<b>4,111</b>	<b>4,073</b>	<b>0.2</b>	<b>0.0</b>

\* Spread of Daily Purchasing Market Rate

**Table 7: Monthly Exchange Rate**

(KHR/USD, End-Period)

Month	Market Rate				Official Rate
	Purchase	Monthly %Change	Sale	Midpoint	
<b>Dec-15</b>	4,048	0.10	4,055	4,052	4,050
<b>Dec-16</b>	4,039	0.17	4,050	4,045	4,037
<b>Dec-17</b>	4,037	0.07	4,046	4,042	4,037
<b>Dec-18</b>	4,027	-0.27	4,039	4,033	4,018
<b>Dec-19</b>	4,079	0.12	4,089	4,084	4,075
<b>2020</b>					
Jan	4,088	0.22	4,100	4,094	4,050
Feb	4,086	-0.05	4,094	4,090	4,070
Mar	4,084	-0.05	4,095	4,090	4,070
Apr	4,108	0.59	4,117	4,113	4,099
May	4,124	0.39	4,135	4,130	4,116
Jun	4,102	-0.53	4,113	4,108	4,093
Jul	4,101	-0.02	4,110	4,106	4,099
Aug	4,107	0.15	4,115	4,111	4,105
Sep	4,109	0.05	4,117	4,113	4,100
Oct	4,084	-0.61	4,094	4,089	4,060
Nov	4,069	-0.37	4,077	4,073	4,048
Dec	4,069	0.00	4,084	4,077	4,045
<b>2021</b>					
Jan	4,077	0.20	4,089	4,083	4,065
Feb	4,083	0.15	4,094	4,089	4,069
Mar	4,062	-0.51	4,069	4,066	4,045
Apr	4,068	0.15	4,083	4,076	4,048
May	4,107	0.96	4,116	4,112	4,072
Jun	4,102	-0.12	4,112	4,107	4,075
Jul	4,107	0.12	4,117	4,112	4,072
Aug	4,119	0.29	4,129	4,124	4,080
Sep	4,119	0.00	4,130	4,125	4,079
Oct	4,099	-0.49	4,109	4,104	4,066
Nov	4,102	0.07	4,113	4,108	4,069
Dec	4,109	0.17	4,118	4,114	4,074

**Chart 7: Trend of Monthly Exchange Rate**

**Table 8: The Value of KHR Against Other Currencies**  
(Official Buying Rate, End-Period)

Unit	SDR	US Dollar	Euro	Japanese Yen	British Pounds	Indonesian Rupiah	Malaysian Ringgit	Philippines Peso	Singapore Dollar	Thai Baht	Vietnamese Dong	China Yuan
	1	1	1	100	1	1000	1	100	1	1	1000	1
Dec-17	5,735	4,037	4,821	3,574	5,426	298	994	8,094	3,017	124	178	618
Dec-18	5,588	4,018	4,597	3,641	5,098	277	969	7,653	2,942	124	174	584
Dec-19	5,635	4,075	4,565	3,743	5,344	293	994	8,050	3,023	136	176	583
<b>2020</b>												
Feb	5,575	4,070	4,476	3,711	5,245	290	967	8,010	2,918	129	175	581
Mar	5,578	4,070	4,490	3,768	5,037	249	942	7,996	2,859	125	172	573
Apr	5,591	4,099	4,454	3,843	5,106	269	946	8,120	2,904	126	176	579
May	5,621	4,116	4,558	3,824	5,068	280	947	8,120	2,903	129	177	576
Jun	5,631	4,093	4,602	3,802	5,038	289	956	8,210	2,938	133	177	578
Jul	5,768	4,099	4,867	3,919	5,377	282	967	8,341	2,990	131	177	585
Aug	5,822	4,105	4,889	3,896	5,480	281	986	8,463	3,022	132	177	598
Sep	5,770	4,100	4,815	3,878	5,274	276	988	8,455	2,997	130	177	602
Oct	5,756	4,060	4,780	3,884	5,289	278	975	8,394	2,981	130	175	606
Nov	5,769	4,048	4,844	3,896	5,395	288	995	8,421	3,027	134	175	616
Dec	5,826	4,045	4,962	3,908	5,465	287	1,000	8,423	3,049	135	175	619
<b>2021</b>												
Jan	5,848	4,065	4,926	3,896	5,578	289	1,005	8,450	3,059	136	176	630
Feb	5,887	4,069	4,944	3,831	5,686	289	1,003	8,372	3,063	135	177	630
Mar	5,731	4,045	4,742	3,664	5,558	280	975	8,333	3,003	129	175	616
Apr	5,807	4,048	4,912	3,731	5,649	279	987	8,352	3,056	129	176	625
May	5,878	4,072	4,962	3,705	5,772	285	983	8,520	3,075	130	177	640
Jun	5,814	4,075	4,850	3,686	5,645	281	981	8,402	3,030	127	177	630
Jul	5,813	4,072	4,842	3,722	5,687	281	961	8,095	3,010	124	177	631
Aug	5,804	4,080	4,813	3,711	5,613	284	982	8,189	3,033	126	179	631
Sep	5,766	4,079	4,732	3,646	5,480	285	974	8,022	2,997	120	179	630
Oct	5,743	4,066	4,716	3,573	5,584	287	980	8,017	3,014	122	179	636
Nov	5,689	4,069	4,593	3,574	5,416	284	961	8,079	2,973	121	179	637
Dec	5,702	4,074	4,614	3,541	5,499	286	977	7,992	3,015	122	179	639
<b>Monthly % Change</b>	<b>0.23</b>	<b>0.12</b>	<b>0.46</b>	<b>-0.92</b>	<b>1.53</b>	<b>0.70</b>	<b>1.66</b>	<b>-1.08</b>	<b>1.41</b>	<b>0.83</b>	<b>0.00</b>	<b>0.31</b>

**Table 9: Deposit Money Bank's Interest Rates on Deposits and Loans in KHR and USD**

	Dec-17	Dec-18	Dec-19	Jun-20	Jul-20	Aug-20	Sep-20	Oct-20	Nov-20	Dec-20	Jan-21	Feb-21	Mar-21	Apr-21	May-21	Jun-21	Jul-21	Aug-21	Sep-21	Oct-21	Nov-21	Dec-21	
<i>Weighted Average Rate on New Amount</i>																							
<b>Interest Rate on Deposits and Loans in KHR</b>																							
<b>Deposit (1)</b>	0.90	0.33	0.57	0.57	0.74	0.50	0.56	0.58	0.58	0.50	0.58	0.56	0.57	0.58	0.73	0.65	0.56	0.52	0.65	0.83	0.82	0.90	0.97
Demand Deposits	0.04	0.03	0.12	0.04	0.04	0.04	0.06	0.04	0.04	0.19	0.03	0.05	0.02	0.09	0.04	0.04	0.04	0.04	0.06	0.34	0.35	0.31	0.35
Saving Deposits	1.19	0.59	0.60	0.69	0.67	0.69	0.70	0.59	0.59	0.60	0.61	0.61	0.62	0.71	0.50	0.60	0.61	0.58	0.59	0.89	0.89	1.04	1.05
Term Deposits	4.70	5.09	4.10	5.05	4.22	4.17	4.68	4.01	4.16	5.34	5.04	5.13	5.40	5.59	5.16	4.47	4.11	5.26	5.26	4.39	4.39	4.24	4.79
Other Deposits	0.00	0.00	2.47	2.21	1.61	1.80	2.62	2.28	2.28	3.49	4.63	2.64	3.16	2.19	2.25	2.20	2.20	2.20	2.20	2.20	2.20	2.15	2.20
<b>Loans (2)</b>	14.51	12.21	8.59	9.66	11.36	11.41	10.89	10.55	10.71	9.82	11.34	11.29	10.56	9.89	10.67	10.39	10.74	10.24	10.59	11.00	11.00	10.70	9.87
Overdraft	7.55	8.30	7.72	7.98	8.45	8.17	8.39	8.40	7.64	7.14	8.45	7.41	8.76	8.19	7.45	8.29	8.35	7.73	8.28	7.76	7.19	6.32	6.32
Credit Card	17.91	16.98	16.73	17.28	16.17	14.70	16.11	15.94	15.51	14.21	13.64	14.14	15.63	17.66	14.07	13.29	14.03	14.54	14.14	13.82	13.07	13.07	13.84
Term Loans	14.91	12.36	9.13	10.31	11.53	11.58	11.05	10.67	10.80	10.15	11.49	11.46	10.77	9.95	10.82	10.70	11.04	10.33	10.78	11.04	10.85	10.18	10.18
Other Loans	10.71	7.81	5.59	6.96	6.03	6.75	6.22	6.76	7.18	6.47	5.65	6.52	6.85	7.50	6.86	7.26	7.66	6.40	6.79	5.61	6.87	7.00	7.00
<b>Interest Rate on Deposits and Loans in USD</b>																							
<b>Deposit (1)</b>	0.75	0.72	0.58	0.46	0.41	0.50	0.42	0.41	0.40	0.36	0.35	0.35	0.39	0.38	0.30	0.36	0.35	0.34	0.30	0.34	0.34	0.41	0.40
Demand Deposits	0.22	0.30	0.20	0.20	0.08	0.10	0.13	0.10	0.10	0.14	0.10	0.08	0.09	0.07	0.07	0.07	0.14	0.11	0.08	0.15	0.20	0.17	0.18
Saving Deposits	0.54	0.36	0.24	0.24	0.25	0.24	0.24	0.20	0.17	0.17	0.17	0.20	0.23	0.16	0.17	0.17	0.17	0.17	0.15	0.20	0.21	0.24	0.21
Term Deposits	3.30	3.35	3.44	3.34	3.35	3.47	3.21	2.95	3.31	3.24	3.06	3.23	3.31	3.27	3.36	3.53	3.44	3.51	3.50	3.58	3.58	3.67	3.98
Other Deposits	1.65	2.64	2.47	0.79	0.79	0.79	0.84	0.75	0.80	0.75	0.80	0.78	0.70	0.78	0.54	4.08	0.55	0.48	0.39	0.40	0.43	0.40	3.93
<b>Loans (2)</b>	8.31	8.47	7.97	8.04	8.33	8.51	7.96	7.87	8.55	8.45	8.74	8.79	8.22	8.24	8.39	8.32	8.43	8.38	8.60	8.01	8.37	8.44	8.44
Overdraft	7.51	7.57	7.57	7.45	5.58	6.30	6.85	6.12	5.49	6.15	6.79	6.77	5.80	6.57	6.81	5.57	5.47	6.44	7.49	5.53	5.93	5.93	5.97
Credit Card	19.26	28.93	11.97	16.89	15.23	16.14	15.61	15.71	16.80	17.02	17.56	16.72	16.62	16.44	16.68	16.22	13.20	15.87	15.44	15.80	16.70	17.27	17.27
Term Loans	9.92	9.64	8.72	9.22	9.27	9.27	8.37	8.69	9.44	9.11	9.52	9.66	8.90	9.14	9.12	9.08	9.33	9.26	9.00	8.67	9.10	9.09	9.09
Other Loans	6.08	6.29	6.50	5.60	5.76	6.26	6.61	5.96	5.89	6.01	6.33	6.16	6.04	6.16	6.34	5.85	5.94	5.98	6.31	5.82	6.27	6.27	5.93
<i>Weighted Average Rate on Outstanding Amount</i>																							
<b>Interest Rate on Deposits and Loans in KHR</b>																							
<b>Deposit (1)</b>	2.70	2.69	2.54	2.83	2.83	2.81	2.80	2.80	2.83	2.98	2.86	2.81	2.89	2.96	2.96	2.96	3.00	3.04	3.13	3.23	3.23	3.31	3.31
Demand Deposits	0.17	0.20	0.22	0.29	0.29	0.28	0.26	0.30	0.19	0.19	0.17	0.21	0.22	0.26	0.27	0.26	0.34	0.30	0.40	0.34	0.34	0.34	0.47
Saving Deposits	1.31	1.01	0.91	0.93	0.98	0.92	0.90	0.72	0.83	0.82	0.80	0.82	0.81	0.82	0.81	0.82	0.89	0.88	0.87	0.91	0.90	0.99	1.02
Term Deposits	5.87	5.87	5.42	5.71	5.53	5.59	5.62	5.55	5.63	5.66	5.73	5.69	5.75	5.81	5.87	5.78	5.70	5.78	5.79	5.78	5.82	5.82	5.85
Other Deposits	0.00	7.00	2.81	2.93	2.56	2.57	2.60	2.59	2.61	3.20	3.20	2.60	2.96	2.60	2.58	2.58	2.58	2.58	2.59	2.24	2.20	2.18	2.20
<b>Loans (2)</b>	16.13	13.30	10.38	10.27	10.27	10.28	10.27	10.26	10.54	10.35	10.46	10.45	10.38	10.37	10.35	10.36	10.32	10.30	10.26	10.47	10.45	10.45	10.36
Overdraft	8.72	8.34	8.08	8.12	8.09	8.04	8.00	7.93	7.92	7.93	7.93	7.92	7.91	7.84	7.87	7.90	7.79	7.87	7.89	7.85	7.80	8.26	8.26
Credit Card	20.88	19.51	17.29	16.73	16.78	16.62	16.46	16.52	16.41	16.25	16.25	16.08	16.03	16.03	15.93	15.90	15.79	15.74	15.69	15.68	15.46	15.30	15.30
Term Loans	16.55	13.50	10.62	10.44	10.44	10.45	10.45	10.43	10.71	10.54	10.63	10.62	10.56	10.53	10.51	10.53	10.49	10.47	10.43	10.63	10.61	10.52	10.52
Other Loans	11.09	7.72	6.28	6.89	6.87	6.87	6.83	6.82	6.82	6.73	6.75	6.77	6.70	6.72	6.67	6.71	6.81	6.89	6.87	6.80	6.79	6.67	6.67
<b>Interest Rate on Deposits and Loans in USD</b>																							
<b>Deposit (1)</b>	2.48	2.24	2.25	2.40	2.41	2.31	2.32	2.30	2.39	2.37	2.32	2.31	2.59	2.32	2.32	2.33	2.42	2.42	2.40	2.37	2.41	2.41	2.46
Demand Deposits	0.51	0.46	0.35	0.44	0.47	0.40	0.42	0.46	0.41	0.41	0.41	0.39	0.39	0.41	0.41	0.40	0.40	0.42	0.40	0.39	0.40	0.40	0.40
Saving Deposits	0.83	0.61	0.43	0.43	0.44	0.42	0.42	0.36	0.42	0.41	0.41	0.41	0.40	0.40	0.41	0.41	0.40	0.41	0.41	0.45	0.47	0.49	0.47
Term Deposits	4.41	4.38	4.34	4.39	4.34	4.27	4.30	4.26	4.41	4.40	4.27	4.26	4.39	4.26	4.23	4.30	4.42	4.42	4.40	4.37	4.45	4.45	4.53
Other Deposits	3.01	2.57	2.43	1.37	1.00	0.96	0.87	0.96	0.98	0.94	1.08	0.91	0.89	0.96	1.18	0.79	0.67	0.71	0.65	0.58	0.58	3.28	3.28
<b>Loans (2)</b>	9.22	9.76	9.27	9.22	9.19	9.17	9.11	9.17	9.21	9.14	8.92	9.07	9.02	9.00	8.97	8.93	8.99	8.97	8.99	8.92	9.03	8.97	8.97
Overdraft	8.10	7.94	7.82	7.84	7.87	7.80	7.77	7.80	7.79	7.71	7.74	7.68	7.66	7.66	7.65	7.60	7.59	7.54	7.51	7.50	7.46	7.46	7.47
Credit Card	15.64	28.67	15.53	17.95	18.02	17.98	17.83	17.56	17.21	17.11	17.13	17.01	16.86	16.90	16.72	16.73	16.66	16.55	16.61	16.52	16.44	16.62	16.62
Term Loans	9.43	9.74	9.51	9.44	9.40	9.38	9.31	9.38	9.43	9.36	9.09	9.26	9.21	9.19	9.16	9.13	9.19	9.17	9.16	9.12	9.24	9.24	9.18
Other Loans	6.96	6.88	7.19	6.98	6.97	7.02	7.27	7.00	6.95	6.93	6.94	6.96	6.95	6.94	6.84	6.86	6.82	6.86	7.56	6.83	6.89	6.89	6.83

Including Commercial Banks and Specialized Banks

(1). Weighted average interest rate on deposits

(2). Weighted average interest rate on loans excluded bank placements.

\*Revised Data

**Table 10: Central Bank Survey\***

(In Billion KHR)

	Aug-21	Sep-21	Oct-21	Nov-21	Dec-21
<b>Net Foreign Assets</b>	<b>80,551.5</b>	<b>78,871.3</b>	<b>78,620.6</b>	<b>79,169.2</b>	<b>81,117.4</b>
Claims on Nonresidents	82,020.5	80,330.6	80,471.9	80,609.1	82,560.6
Liabilities to Nonresidents	-1,469.0	-1,459.3	-1,851.3	-1,439.9	-1,443.2
<b>Claims on Other Depository Corporations</b>	<b>3,500.4</b>	<b>3,078.1</b>	<b>2,616.9</b>	<b>2,304.6</b>	<b>2,083.2</b>
<b>Net Claims on Central Government</b>	<b>-14,205.6</b>	<b>-13,148.7</b>	<b>-12,658.1</b>	<b>-12,757.8</b>	<b>-12,661.6</b>
Claims on Central Government	0.0	0.0	0.0	0.0	0.0
Liabilities to Central Government	-14,205.6	-13,148.7	-12,658.1	-12,757.8	-12,661.6
<b>Claims on Other Sectors</b>	<b>157.0</b>	<b>91.3</b>	<b>63.3</b>	<b>67.7</b>	<b>43.9</b>
Claims on Other Financial Corporations	72.4	41.7	19.1	19.9	19.8
Claims on State and Local Government	0.0	0.0	0.0	0.0	0.0
Claims on Public Nonfinancial Corporations	0.0	0.0	0.0	0.0	0.0
Claims on Private Sector	84.6	49.6	44.2	47.8	24.1
<b>Monetary Base</b>	<b>45,744.3</b>	<b>45,116.5</b>	<b>45,377.7</b>	<b>45,931.3</b>	<b>47,660.2</b>
Currency in Circulation	16,829.6	16,742.9	16,193.4	16,267.5	16,372.5
Liabilities to Other Depository Corporations	28,829.3	28,311.6	29,121.1	29,601.9	31,262.0
Liabilities to Other Sectors	85.5	62.0	63.3	61.9	25.8
<b>Other Liabilities to Other Depository Corporations</b>	<b>17,986.2</b>	<b>18,785.8</b>	<b>17,933.4</b>	<b>17,817.2</b>	<b>17,571.8</b>
<b>Deposits And Securities Other Than Shares Excl. Form Monetary Base</b>	<b>82.4</b>	<b>77.1</b>	<b>72.7</b>	<b>74.9</b>	<b>62.9</b>
Deposits Included in Broad Money	0.0	0.0	0.0	0.0	0.0
Securities Other Than Shares Incl. in Broad Money	0.0	0.0	0.0	0.0	0.0
Deposits Excl. From Broad Money	43.4	43.5	43.4	43.5	43.9
Securities Other Than Shares Excl. From Broad Money	39.1	33.6	29.3	31.4	18.9
<b>Loans</b>	<b>0.0</b>	<b>0.0</b>	<b>0.0</b>	<b>0.0</b>	<b>0.0</b>
<b>Financial Derivatives</b>	<b>0.0</b>	<b>0.0</b>	<b>0.0</b>	<b>0.0</b>	<b>0.0</b>
<b>Shares and Other Equity</b>	<b>7,988.7</b>	<b>6,740.7</b>	<b>7,124.5</b>	<b>6,817.8</b>	<b>7,181.3</b>
<b>Other Items (Net)</b>	<b>-1,798.4</b>	<b>-1,828.0</b>	<b>-1,865.7</b>	<b>-1,857.6</b>	<b>-1,893.2</b>
<i>IFS Vertical Check</i>	<i>0.0</i>	<i>0.0</i>	<i>0.0</i>	<i>0.0</i>	<i>0.0</i>

\* Included only central bank

\*\* Revised Data

**Table 11: Other Depository Corporations Survey\***

(In Billion KHR)

	Aug-21**	Sep-21**	Oct-21**	Nov-21**	Dec-21
<b>Net Foreign Assets</b>	<b>-20,539.9</b>	<b>-20,827.8</b>	<b>-20,843.0</b>	<b>-21,330.4</b>	<b>-24,110.9</b>
Claims on Nonresidents	17,098.5	17,488.5	18,073.2	18,012.4	17,511.3
Liabilities to Nonresidents	-37,638.3	-38,316.3	-38,916.2	-39,342.8	-41,622.2
<b>Claims On Central Bank</b>	<b>47,224.9</b>	<b>47,362.6</b>	<b>47,110.7</b>	<b>47,707.8</b>	<b>48,845.1</b>
Currency	1,819.5	1,946.6	1,913.7	1,845.2	1,776.3
Reserve Deposits and Securities Other Than Shares	45,389.4	45,403.2	45,187.5	45,855.2	47,061.9
Other Claims on Central Bank	15.9	12.8	9.5	7.4	6.8
<b>Net Claims on Central Government</b>	<b>-6,269.1</b>	<b>-6,561.2</b>	<b>-6,166.5</b>	<b>-6,289.0</b>	<b>-6,878.4</b>
Claims on Central Government	102.7	115.3	127.0	137.3	91.2
Liabilities to Central Government	-6,371.7	-6,676.4	-6,293.5	-6,426.2	-6,969.6
<b>Claims on Other Sectors</b>	<b>174,060.6</b>	<b>177,787.8</b>	<b>179,911.3</b>	<b>183,905.4</b>	<b>187,991.9</b>
Claims on Other Financial Corporations	4,393.1	4,282.4	4,300.0	4,451.9	4,540.0
Claims on State and Local Government	0.0	0.0	0.0	0.0	0.0
Claims on Public Nonfinancial Corporations	0.8	0.8	0.8	0.7	0.7
Claims on Private Sector	169,666.8	173,504.6	175,610.5	179,452.8	183,451.1
<b>Liabilities to Central Bank</b>	<b>3,047.5</b>	<b>2,926.6</b>	<b>2,765.4</b>	<b>2,777.7</b>	<b>2,856.5</b>
<b>Transferable Deposits Incl. in Broad Money</b>	<b>27,053.9</b>	<b>28,335.3</b>	<b>29,382.5</b>	<b>30,308.5</b>	<b>30,152.0</b>
<b>Other Deposits Incl. in Broad Money</b>	<b>108,042.3</b>	<b>109,690.4</b>	<b>110,854.9</b>	<b>112,500.2</b>	<b>113,964.6</b>
<b>Securities Other Than Shares Incl. in Broad Money</b>	<b>0.0</b>	<b>0.0</b>	<b>0.0</b>	<b>0.0</b>	<b>0.0</b>
<b>Deposits Excl. From Broad Money</b>	<b>211.5</b>	<b>221.8</b>	<b>279.6</b>	<b>283.7</b>	<b>235.9</b>
<b>Securities Other Than Shares Excl. From Broad Money</b>	<b>0.0</b>	<b>0.0</b>	<b>0.0</b>	<b>0.0</b>	<b>0.0</b>
<b>Loans</b>	<b>1,904.5</b>	<b>1,901.0</b>	<b>1,952.6</b>	<b>1,937.3</b>	<b>1,993.9</b>
<b>Financial Derivatives</b>	<b>0.0</b>	<b>0.0</b>	<b>0.0</b>	<b>0.0</b>	<b>0.0</b>
<b>Shares and Other Equity</b>	<b>48,734.0</b>	<b>49,855.0</b>	<b>50,275.4</b>	<b>50,698.2</b>	<b>51,108.0</b>
<b>Other Items (Net)</b>	<b>5,482.9</b>	<b>4,831.2</b>	<b>4,502.0</b>	<b>5,488.2</b>	<b>5,536.8</b>
<i>IFS Vertical Check</i>	<i>0.0</i>	<i>0.0</i>	<i>0.0</i>	<i>0.0</i>	<i>0.0</i>

\* Included commercial banks and MDIs

\*\* Revised Data

**Table 12: Depository Corporations Survey\***

(In Billion KHR)

	Aug-21**	Sep-21**	Oct-21**	Nov-21**	Dec-21
<b>Net Foreign Assets</b>	<b>60,011.6</b>	<b>58,043.5</b>	<b>57,777.6</b>	<b>57,838.8</b>	<b>57,006.5</b>
Claims on Nonresidents	99,118.9	97,819.1	98,545.1	98,621.6	100,071.9
Liabilities to Nonresidents	-39,107.3	-39,775.6	-40,767.5	-40,782.7	-43,065.4
<b>Domestic Claims</b>	<b>153,743.0</b>	<b>158,169.2</b>	<b>161,149.9</b>	<b>164,926.3</b>	<b>168,495.8</b>
<b>Net Claims on Central Government</b>	<b>-20,474.7</b>	<b>-19,709.9</b>	<b>-18,824.6</b>	<b>-19,046.8</b>	<b>-19,540.0</b>
Claims on Central Government	102.7	115.3	127.0	137.3	91.2
Liabilities to Central Government	-20,577.3	-19,825.1	-18,951.6	-19,184.1	-19,631.2
<b>Claims on Other Sectors</b>	<b>174,217.7</b>	<b>177,879.1</b>	<b>179,974.6</b>	<b>183,973.1</b>	<b>188,035.8</b>
Claims on Other Financial Corporations	4,465.5	4,324.1	4,319.1	4,471.8	4,559.8
Claims on State and Local Government	0.0	0.0	0.0	0.0	0.0
Claims on Public Nonfinancial Corporations	0.8	0.8	0.8	0.7	0.7
Claims on Private Sector	169,751.4	173,554.2	175,654.7	179,500.6	183,475.3
<b>Broad Money Liabilities (M2)</b>	<b>150,191.8</b>	<b>152,884.1</b>	<b>154,580.4</b>	<b>157,293.0</b>	<b>158,738.6</b>
Currency Outside Depository Corporations	15,010.0	14,796.3	14,279.7	14,422.3	14,596.2
Transferable Deposits	27,121.1	28,379.0	29,427.5	30,352.1	30,159.5
Other Deposits	108,060.6	109,708.7	110,873.2	112,518.5	113,982.9
Securities Other Than Shares	0.0	0.0	0.0	0.0	0.0
<i>of which Foreign Currency (of M2)</i>	<i>123,597.4</i>	<i>126,294.9</i>	<i>128,423.6</i>	<i>130,769.4</i>	<i>131,697.7</i>
<b>Deposits Excl. From Broad Money</b>	<b>254.9</b>	<b>265.2</b>	<b>323.0</b>	<b>327.2</b>	<b>279.8</b>
<b>Securities Other Than Shares Excl. From Broad Money</b>	<b>39.1</b>	<b>33.6</b>	<b>29.3</b>	<b>31.4</b>	<b>18.9</b>
<b>Loans</b>	<b>1,904.5</b>	<b>1,901.0</b>	<b>1,952.6</b>	<b>1,937.3</b>	<b>1,993.9</b>
<b>Financial Derivative</b>	<b>0.0</b>	<b>0.0</b>	<b>0.0</b>	<b>0.0</b>	<b>0.0</b>
<b>Shares and Other Equity</b>	<b>56,722.7</b>	<b>56,595.8</b>	<b>57,400.0</b>	<b>57,516.0</b>	<b>58,289.3</b>
<b>Other Items (Net)</b>	<b>4,641.8</b>	<b>4,533.0</b>	<b>4,642.2</b>	<b>5,660.2</b>	<b>6,181.8</b>
<i>IFS Vertical Check</i>	<i>0.0</i>	<i>0.0</i>	<i>0.0</i>	<i>0.0</i>	<i>0.0</i>

\* Included data of central bank and other depository corporations(ODCs)

\*\* Revised Data

**Table 13: Other Financial Corporations Survey\***

(In Billion KHR)

	<b>Aug-21</b>	<b>Sep-21</b>	<b>Oct-21</b>	<b>Nov-21</b>	<b>Dec-21</b>
<b>Net Foreign Assets</b>	<b>-856.1</b>	<b>-904.1</b>	<b>-940.3</b>	<b>-1,026.3</b>	<b>-1,102.6</b>
Claims on Nonresidents	172.5	162.1	183.8	140.7	131.8
Liabilities to Nonresidents	-1,028.5	-1,066.2	-1,124.2	-1,167.1	-1,234.4
<b>Claims on Depository Corporations</b>	<b>556.0</b>	<b>572.5</b>	<b>588.0</b>	<b>645.4</b>	<b>822.1</b>
<b>Net Claims on Central Government</b>	<b>-19.3</b>	<b>-21.1</b>	<b>-21.9</b>	<b>-22.7</b>	<b>-24.2</b>
Claims on Central Government	2.6	2.9	3.2	3.5	3.9
Liabilities to Central Government	-22.0	-24.0	-25.2	-26.2	-28.1
<b>Claims on Other Sectors</b>	<b>1,841.1</b>	<b>1,887.2</b>	<b>1,918.3</b>	<b>2,021.8</b>	<b>2,217.9</b>
Claims on State and Local Government	0.0	0.0	0.0	0.0	0.0
Claims on Public Nonfinancial Corporations	0.0	0.0	0.0	0.0	0.0
Claims on Private Sector	1,841.1	1,887.2	1,918.3	2,021.8	2,217.9
<b>Deposit</b>	<b>136.2</b>	<b>158.4</b>	<b>179.2</b>	<b>208.0</b>	<b>240.3</b>
<b>Securities Other Than Shares</b>	<b>0.0</b>	<b>0.0</b>	<b>0.0</b>	<b>0.0</b>	<b>0.0</b>
<b>Loans</b>	<b>152.4</b>	<b>145.4</b>	<b>149.0</b>	<b>173.3</b>	<b>157.2</b>
<b>Financial Derivatives</b>	<b>0.0</b>	<b>0.0</b>	<b>0.0</b>	<b>0.0</b>	<b>0.0</b>
<b>Shares and Other Equity</b>	<b>1,214.4</b>	<b>1,218.5</b>	<b>1,219.3</b>	<b>1,223.9</b>	<b>1,229.5</b>
<b>Other Items (Net)</b>	<b>18.6</b>	<b>12.1</b>	<b>-3.5</b>	<b>12.9</b>	<b>286.1</b>
<i>IFS Vertical Check</i>	<i>0.0</i>	<i>0.0</i>	<i>0.0</i>	<i>0.0</i>	<i>0.0</i>

\* Included only specialized banks

\*\* Revised Data

**Table 14: Financial Corporations Survey\***

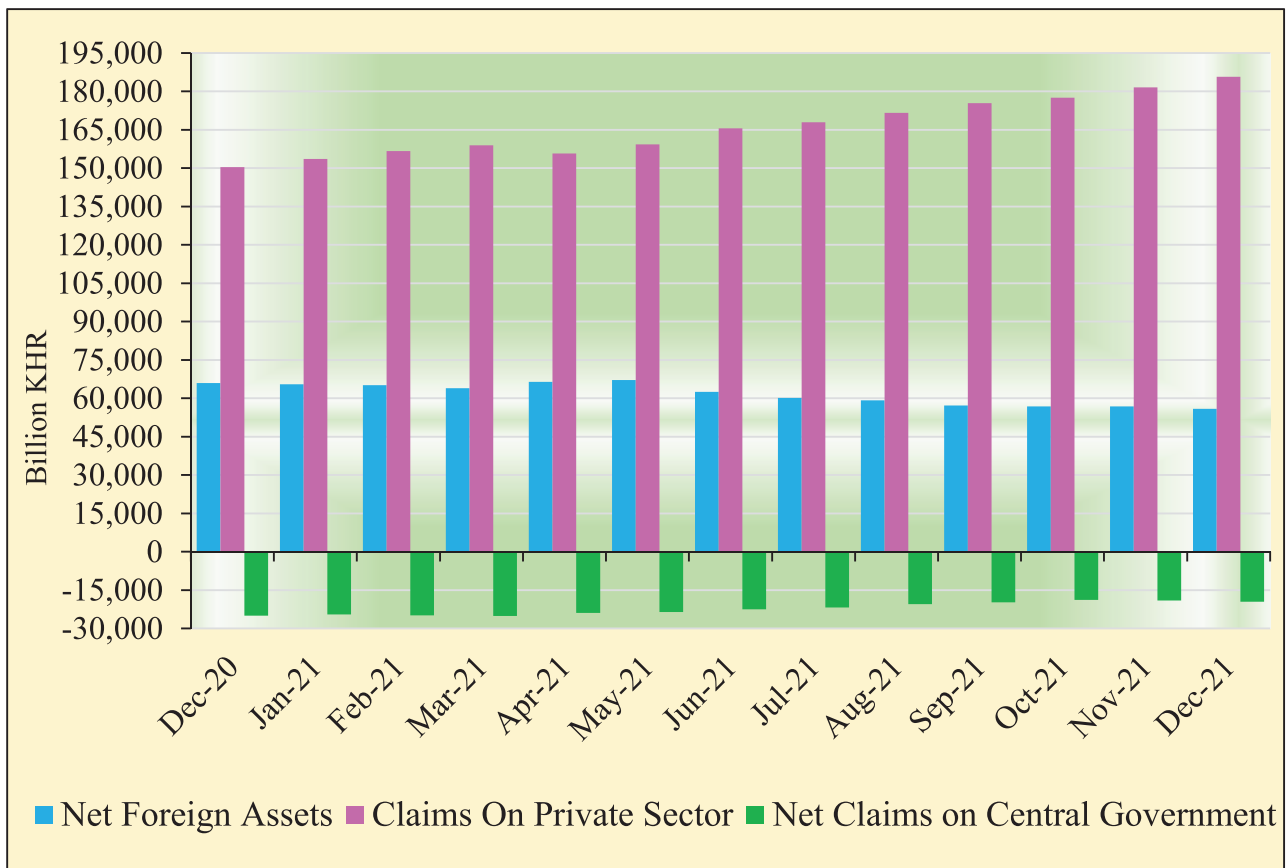
(In Billion KHR)

	Aug-21**	Sep-21**	Oct-21**	Nov-21**	Dec-21
<b>Net Foreign Assets</b>	<b>59,155.5</b>	<b>57,139.4</b>	<b>56,837.3</b>	<b>56,812.5</b>	<b>55,903.9</b>
Claims on Nonresidents	99,291.4	97,981.2	98,729.0	98,762.3	100,203.6
Liabilities to Nonresidents	-40,135.9	-40,841.8	-41,891.7	-41,949.8	-44,299.7
<b>Domestic Claims</b>	<b>151,099.3</b>	<b>155,711.3</b>	<b>158,727.2</b>	<b>162,453.6</b>	<b>166,129.6</b>
<b>Net Claims on Central Government</b>	<b>-20,494.0</b>	<b>-19,731.0</b>	<b>-18,846.6</b>	<b>-19,069.5</b>	<b>-19,564.3</b>
Claims on Central Government	105.3	118.2	130.2	140.8	95.1
Liabilities to Central Government	-20,599.3	-19,849.2	-18,976.8	-19,210.3	-19,659.3
<b>Claims on Other Sectors</b>	<b>171,593.3</b>	<b>175,442.2</b>	<b>177,573.8</b>	<b>181,523.1</b>	<b>185,693.9</b>
Claims on State and Local Government	0.0	0.0	0.0	0.0	0.0
Claims on Public Nonfinancial Corporations	0.8	0.8	0.8	0.7	0.7
Claims on Private Sector	171,592.6	175,441.4	177,573.0	181,522.4	185,693.2
<b>Currency Outside Financial Corporations</b>	<b>14,983.2</b>	<b>14,768.6</b>	<b>14,230.1</b>	<b>14,399.0</b>	<b>14,572.7</b>
<b>Deposits</b>	<b>132,886.4</b>	<b>135,776.5</b>	<b>138,061.5</b>	<b>140,718.0</b>	<b>142,336.0</b>
<b>Securities Other Than Shares</b>	<b>0.0</b>	<b>0.0</b>	<b>0.0</b>	<b>0.0</b>	<b>0.0</b>
<b>Loans</b>	<b>1,874.2</b>	<b>1,881.1</b>	<b>1,923.3</b>	<b>1,927.4</b>	<b>1,982.8</b>
<b>Financial Derivatives</b>	<b>0.0</b>	<b>0.0</b>	<b>0.0</b>	<b>0.0</b>	<b>0.0</b>
<b>Shares and Other Equity</b>	<b>57,937.1</b>	<b>57,814.3</b>	<b>58,619.3</b>	<b>58,739.9</b>	<b>59,518.8</b>
<b>Other Items (Net)</b>	<b>2,573.9</b>	<b>2,610.1</b>	<b>2,730.3</b>	<b>3,481.8</b>	<b>3,623.1</b>
<i>IFS Vertical Check</i>	<i>0.0</i>	<i>0.0</i>	<i>0.0</i>	<i>0.0</i>	<i>0.0</i>

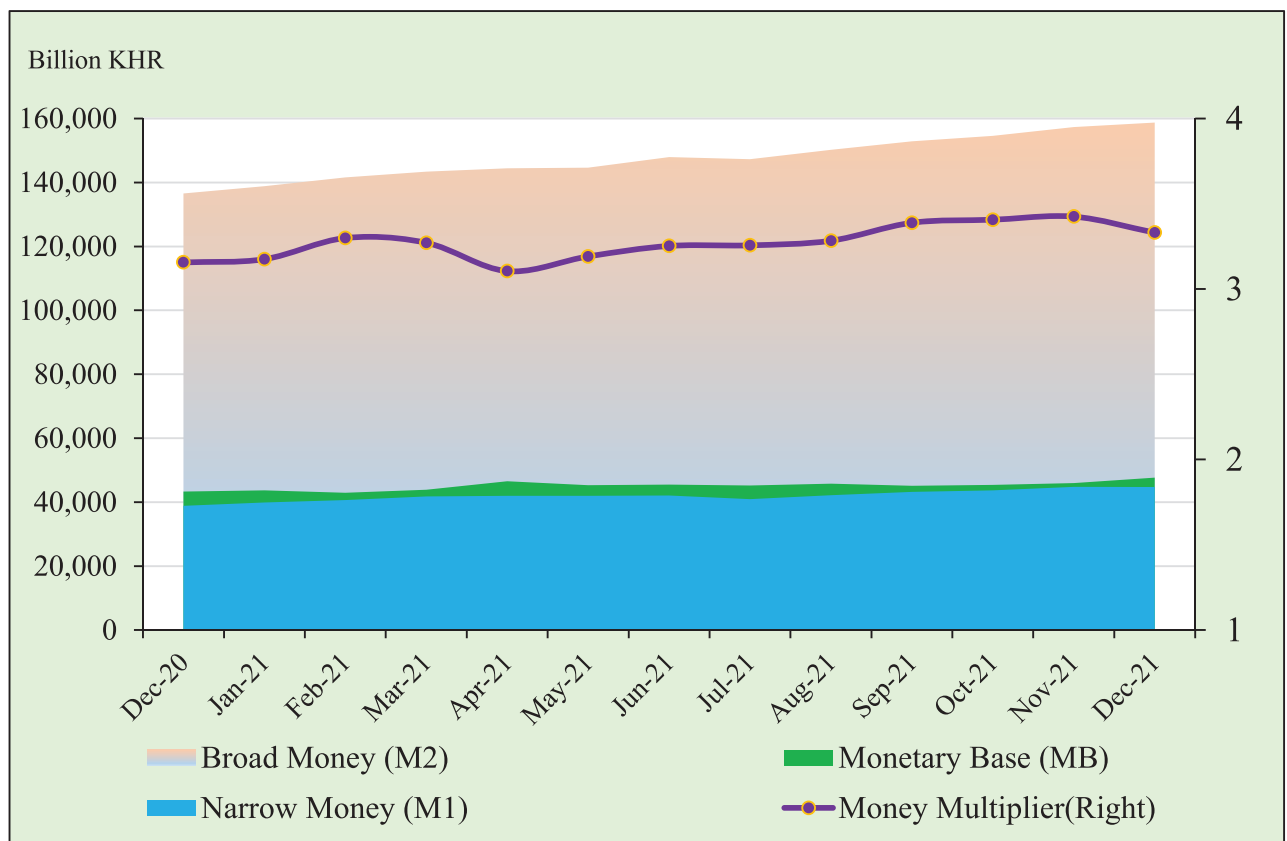
\* Included data of depository corporations and other financial corporations

\*\* Revised Data

### Chart 8: Financial Corporations Survey



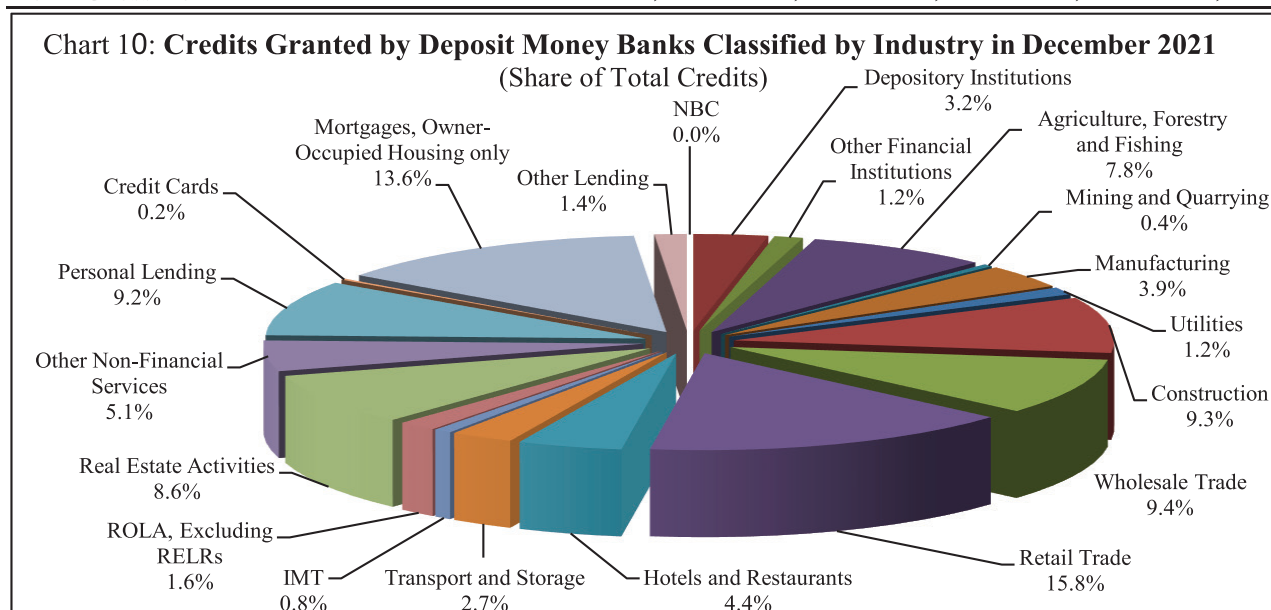
### Chart 9: Monetary Aggregates Components



**Table 15: Credit Granted by Banking Institutions Classified by Industry**

(In Billion KHR)

	Aug-21	Sep-21	Oct-21	Nov-21	Dec-21
<b>1. Financial Institutions</b>	<b>6,648.6</b>	<b>6,722.6</b>	<b>6,855.2</b>	<b>6,954.9</b>	<b>7,222.3</b>
1.1. National Bank of Cambodia	0.0	0.0	0.0	0.0	0.0
1.2. Depository Institutions	4,885.8	4,923.3	4,915.7	5,003.1	5,202.7
1.3. Other Financial Institutions	1,762.8	1,799.2	1,939.6	1,951.9	2,019.6
<b>2. Non-Financial Institutions</b>	<b>105,799.0</b>	<b>107,971.1</b>	<b>109,323.8</b>	<b>114,115.5</b>	<b>117,067.9</b>
2.1. Agriculture, Forestry and Fishing	10,957.0	11,154.3	11,244.7	12,533.2	12,858.2
2.2. Mining and Quarrying	657.1	674.3	683.5	692.5	698.8
2.3. Manufacturing	6,048.4	6,223.6	6,270.7	6,416.5	6,385.7
2.4. Utilities	1,895.7	1,926.4	1,949.4	2,023.3	2,052.5
2.5. Construction	14,182.0	14,733.4	14,805.9	14,798.1	15,347.1
2.6. Wholesale Trade	14,300.7	14,710.6	14,859.9	15,299.8	15,451.6
2.7. Retail Trade	23,073.3	23,506.7	23,954.5	25,301.7	26,019.8
2.8. Hotels and Restaurants	6,879.9	6,945.8	7,108.6	7,206.6	7,311.7
2.9. Transport and Storage	3,824.1	3,866.3	3,905.2	4,286.2	4,413.1
2.10. Information Media and Telecommunications	1,229.8	1,256.4	1,209.6	1,260.1	1,238.8
2.11. Rental and Operational Leasing Activities, Excluding Real Estate Leasing and Rentals	2,596.1	2,558.1	2,492.9	2,697.4	2,704.5
2.12. Real Estate Activities	12,404.3	12,681.0	13,036.5	13,345.8	14,157.2
2.13. Other Non-Financial Services	7,750.6	7,734.1	7,802.4	8,254.2	8,428.9
<b>3. Personal Essentials</b>	<b>34,728.0</b>	<b>35,484.7</b>	<b>35,726.0</b>	<b>37,201.9</b>	<b>37,986.0</b>
3.1. Personal Lending	14,799.3	15,214.2	15,468.4	14,871.6	15,209.1
3.2. Credit Cards	292.1	304.0	310.2	329.8	356.5
3.3. Mortgages, Owner-Occupied Housing only	19,636.6	19,966.5	19,947.3	22,000.5	22,420.3
<b>4. Other Lending</b>	<b>1,488.5</b>	<b>1,528.6</b>	<b>1,567.9</b>	<b>1,996.8</b>	<b>2,253.3</b>
<b>Total Gross Loan</b>	<b>148,664.1</b>	<b>151,707.0</b>	<b>153,473.0</b>	<b>160,269.1</b>	<b>164,529.4</b>



**Table 16: Monthly Change of Credit Granted by Banking Institutions Classified by Industry**

	Aug-21	Sep-21	Oct-21	Nov-21	Dec-21
<b>(Monthly Change in Billion KHR)</b>					
<b>1. Financial Institutions</b>	<b>166.3</b>	<b>74.0</b>	<b>132.7</b>	<b>99.7</b>	<b>267.3</b>
1.1. National Bank of Cambodia	0.0	0.0	0.0	0.0	0.0
1.2. Depository Institutions	127.3	37.5	-7.6	87.4	199.6
1.3. Other Financial Institutions	39.0	36.5	140.3	12.3	67.7
<b>2. Non-Financial Institutions</b>	<b>2,020.8</b>	<b>2,172.1</b>	<b>1,352.7</b>	<b>4,791.7</b>	<b>2,952.3</b>
2.1. Agriculture, Forestry and Fishing	275.0	197.3	90.4	1,288.5	325.0
2.2. Mining and Quarrying	15.4	17.1	9.2	9.0	6.3
2.3. Manufacturing	105.8	175.2	47.2	145.8	-30.8
2.4. Utilities	32.2	30.7	23.0	73.9	29.2
2.5. Construction	375.9	551.4	72.5	-7.8	549.0
2.6. Wholesale Trade	231.0	409.8	149.3	440.0	151.7
2.7. Retail Trade	508.0	433.5	447.7	1,347.2	718.2
2.8. Hotels and Restaurants	17.0	65.9	162.8	98.0	105.1
2.9. Transport and Storage	45.6	42.2	38.8	381.1	126.8
2.10. Information Media and Telecommunications	-23.3	26.6	-46.8	50.5	-21.3
2.11. Rental and Operational Leasing Activities, Excluding Real Estate Leasing and Rentals	-0.5	-38.0	-65.3	204.5	7.1
2.12. Real Estate Activities	208.3	276.8	355.5	309.3	811.4
2.13. Other Non-Financial Services	230.3	-16.4	68.3	451.8	174.7
<b>3. Personal Essentials</b>	<b>636.4</b>	<b>756.7</b>	<b>241.3</b>	<b>1,475.8</b>	<b>784.1</b>
3.1. Personal Lending	87.5	414.9	254.2	-596.8	337.5
3.2. Credit Cards	10.9	11.9	6.3	19.5	26.8
3.3. Mortgages, Owner-Occupied Housing only	538.0	329.9	-19.1	2,053.2	419.8
<b>4. Other Lending</b>	<b>114.9</b>	<b>40.1</b>	<b>39.3</b>	<b>428.8</b>	<b>256.5</b>
<b>Total Gross Loan</b>	<b>2,938.4</b>	<b>3,042.9</b>	<b>1,766.0</b>	<b>6,796.1</b>	<b>4,260.3</b>
<b>(Monthly Change in Percent)</b>					
<b>1. Financial Institutions</b>	<b>2.6</b>	<b>1.1</b>	<b>2.0</b>	<b>1.5</b>	<b>3.8</b>
1.1. National Bank of Cambodia	0.0	0.0	0.0	0.0	0.0
1.2. Depository Institutions	2.7	0.8	-0.2	1.8	4.0
1.3. Other Financial Institutions	2.3	2.1	7.8	0.6	3.5
<b>2. Non-Financial Institutions</b>	<b>1.9</b>	<b>2.1</b>	<b>1.3</b>	<b>4.4</b>	<b>2.6</b>
2.1. Agriculture, Forestry and Fishing	2.6	1.8	0.8	11.5	2.6
2.2. Mining and Quarrying	2.4	2.6	1.4	1.3	0.9
2.3. Manufacturing	1.8	2.9	0.8	2.3	-0.5
2.4. Utilities	1.7	1.6	1.2	3.8	1.4
2.5. Construction	2.7	3.9	0.5	-0.1	3.7
2.6. Wholesale Trade	1.6	2.9	1.0	3.0	1.0
2.7. Retail Trade	2.3	1.9	1.9	5.6	2.8
2.8. Hotels and Restaurants	0.2	1.0	2.3	1.4	1.5
2.9. Transport and Storage	1.2	1.1	1.0	9.8	3.0
2.10. Information Media and Telecommunications	-1.9	2.2	-3.7	4.2	-1.7
2.11. Rental and Operational Leasing Activities, Excluded Real Estate Leasing and Rentals	0.0	-1.5	-2.6	8.2	0.3
2.12. Real Estate Activities	1.7	2.2	2.8	2.4	6.1
2.13. Other Non-Financial Services	3.1	-0.2	0.9	5.8	2.1
<b>3. Personal Essentials</b>	<b>1.9</b>	<b>2.2</b>	<b>0.7</b>	<b>4.1</b>	<b>2.1</b>
3.1. Personal Lending	0.6	2.8	1.7	-3.9	2.3
3.2. Credit Cards	3.9	4.1	2.1	6.3	8.1
3.3. Mortgages, Owner-Occupied Housing only	2.8	1.7	-0.1	10.3	1.9
<b>4. Other Lending</b>	<b>8.4</b>	<b>2.7</b>	<b>2.6</b>	<b>27.4</b>	<b>12.8</b>
<b>Total Gross Loan</b>	<b>2.0</b>	<b>2.0</b>	<b>1.2</b>	<b>4.4</b>	<b>2.7</b>

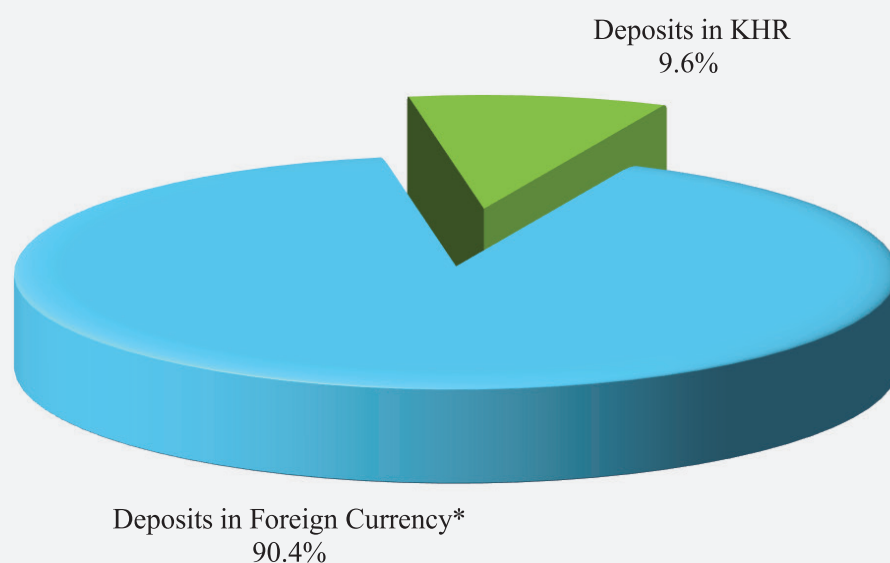
**Table 17: Deposits with Deposit Money Banks**

(In Billion KHR)

	Aug-21	Sep-21	Oct-21	Nov-21	Dec-21
<b>Deposits in KHR</b>					
Demand deposits	3,886.1	3,931.0	3,438.5	3,715.1	3,968.9
Savings deposits	2,878.6	2,773.8	2,753.9	2,742.7	2,912.3
Fixed deposits	5,940.5	6,113.1	6,285.0	6,438.0	6,587.1
Others	253.1	294.3	218.3	262.1	221.4
<b>Total</b>	<b>12,958.3</b>	<b>13,112.2</b>	<b>12,695.7</b>	<b>13,157.9</b>	<b>13,689.7</b>
<b>Deposits in Foreign Currency*</b>					
Demand deposits	26,545.7	28,015.3	28,994.0	30,031.4	29,937.3
Savings deposits	37,644.6	38,177.7	38,622.2	39,871.9	40,237.2
Fixed deposits	54,103.9	54,748.2	55,647.7	56,437.2	57,383.5
Others	1,591.3	1,631.0	1,835.8	1,778.1	1,676.3
<b>Total</b>	<b>119,885.5</b>	<b>122,572.2</b>	<b>125,099.8</b>	<b>128,118.7</b>	<b>129,234.3</b>
<b>Grand Total</b>	<b>132,843.8</b>	<b>135,684.4</b>	<b>137,795.5</b>	<b>141,276.6</b>	<b>142,923.9</b>

\* Deposits in foreign currency include deposits of Cambodian residents and non-residents

**Chart 11: Deposits with Deposit Money Banks Classified by Currency, as of December 2021**  
(Share of Grand Total Deposits)

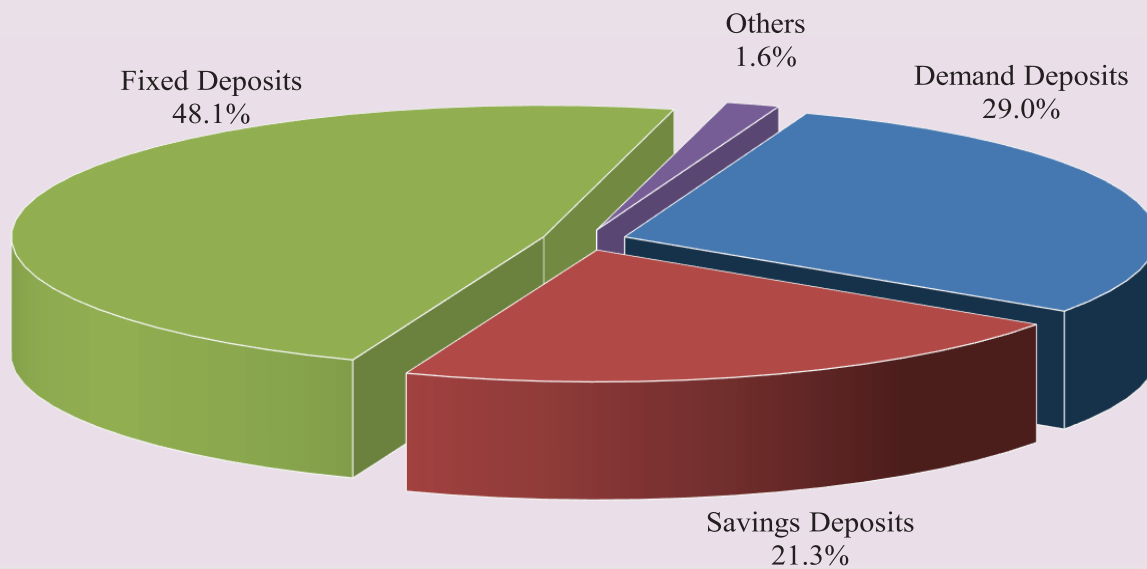


**Table 18: Monthly Change of Deposits with Deposit Money Banks**

	Aug-21	Sep-21	Oct-21	Nov-21	Dec-21
<b>(Change in Billion KHR)</b>					
<b>Deposits in KHR</b>					
Demand deposits	56.4	44.9	-492.6	276.6	253.8
Savings deposits	128.8	-104.8	-19.9	-11.2	169.6
Fixed deposits	368.0	172.6	171.9	153.0	149.1
Others	79.6	41.2	-76.0	43.8	-40.7
<b>Total</b>	<b>632.7</b>	<b>153.9</b>	<b>-416.5</b>	<b>462.2</b>	<b>531.7</b>
<b>Deposits in Foreign Currency</b>					
Demand deposits	1,009.5	1,469.6	978.8	1,037.4	-94.1
Savings deposits	616.1	533.1	444.5	1,249.7	365.3
Fixed deposits	361.6	644.2	899.5	789.5	946.3
Others	-8.6	39.8	204.8	-57.7	-101.8
<b>Total</b>	<b>1,978.5</b>	<b>2,686.7</b>	<b>2,527.6</b>	<b>3,018.9</b>	<b>1,115.6</b>
<b>Grand Total</b>	<b>2,611.3</b>	<b>2,840.6</b>	<b>2,111.0</b>	<b>3,481.1</b>	<b>1,647.3</b>
<b>(Percentage Change)</b>					
<b>Deposits in KHR</b>					
Demand deposits	1.5	1.2	-12.5	8.0	6.8
Savings deposits	4.7	-3.6	-0.7	-0.4	6.2
Fixed deposits	6.6	2.9	2.8	2.4	2.3
Others	45.8	16.3	-25.8	20.0	-15.5
<b>Total</b>	<b>5.1</b>	<b>1.2</b>	<b>-3.2</b>	<b>3.6</b>	<b>4.0</b>
<b>Deposits in Foreign Currency</b>					
Demand deposits	4.0	5.5	3.5	3.6	-0.3
Savings deposits	1.7	1.4	1.2	3.2	0.9
Fixed deposits	0.7	1.2	1.6	1.4	1.7
Others	-0.5	2.5	12.6	-3.1	-5.7
<b>Total</b>	<b>1.7</b>	<b>2.2</b>	<b>2.1</b>	<b>2.4</b>	<b>0.9</b>
<b>Grand Total</b>	<b>2.0</b>	<b>2.1</b>	<b>1.6</b>	<b>2.5</b>	<b>1.2</b>

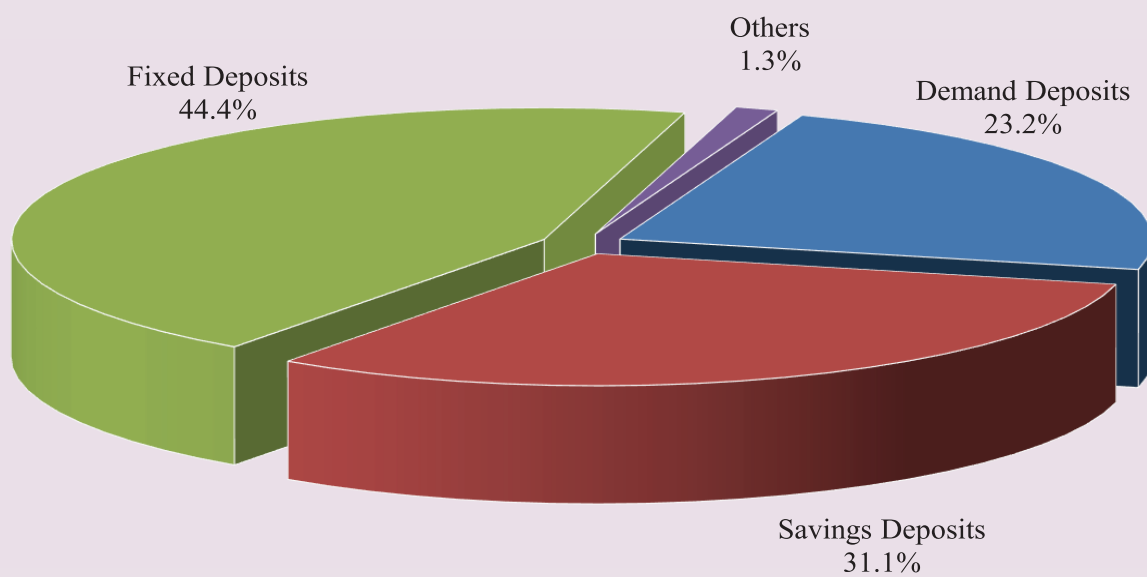
**Chart 12: Deposits in KHR Classified by Type, as of December 2021**

(Share of Total KHR Deposits)



**Chart 13: Deposits in Foreign Currency Classified by Type, as of December 2021**

(Share of Total Foreign Currency Deposits)



**Table 19: Credit Granted by Micro-Finance Institutions\***

Period	Numbers of				Loan Outstanding (In Billion KHR)	Interest Rate	
	District	Commune	Village	Household		Monthly	Annually
<b>Dec-13</b>	2,282	16,384	89,829	1,610,844	5,364	2% - 3%	27%-39%
<b>Dec-14</b>	2,754	18,254	107,964	1,844,893	8,340	2% - 3%	27%-39%
<b>Dec-15</b>	4,576	27,510	141,514	2,149,180	12,365	2% - 4%	25%-41%
<b>Dec-16</b>	5,971	32,599	155,499	2,129,907	12,954	2% - 4%	25%-41%
<b>2017*</b>							
	Numbers of Branches			Number of Borrowers**	Loan Outstanding (In Billion KHR)	Interest Rate	
	Head Office	Province/ Krong	District/Khan			Monthly	Annually
<b>Dec-17</b>	76	366	975	1,776,467	17,236	1.4%-2.5%	16.9%-28.8%
<b>Dec-18</b>	80	399	944	1,872,916	21,813	1.2%-2.0%	15.1%-24.0%
<b>Dec-19</b>	82	406	965	2,109,170	29,357	1.1%-1.6%	13.4%-18.7%
<b>2020</b>							
<b>Feb</b>	81	377	910	2,070,481	29,930	1.1%-1.6%	13.9%-19.2%
<b>Mar</b>	81	376	910	2,081,328	30,267	1.1%-1.7%	13.8%-19.4%
<b>Apr</b>	81	379	913	2,055,408	29,843	1.1%-1.7%	13.6%-19.4%
<b>May</b>	80	370	887	2,031,904	29,259	1.1%-1.6%	13.7%-19.1%
<b>Jun</b>	80	367	889	2,040,143	29,226	1.1%-1.6%	13.4%-18.8%
<b>Jul</b>	80	367	885	2,059,759	29,760	1.1%-1.6%	13.4%-18.7%
<b>Aug</b>	80	372	892	2,065,589	30,220	1.1%-1.6%	13.4%-18.7%
<b>Sep</b>	80	372	893	2,080,532	30,916	1.0%-1.5%	12.8%-17.6%
<b>Oct</b>	79	342	749	1,915,484	26,673	1.1%-1.6%	13.8%-18.8%
<b>Nov</b>	79	343	749	1,920,962	27,189	1.1%-1.6%	13.4%-18.4%
<b>Dec</b>	79	343	749	1,919,926	27,527	1.1%-1.6%	13.4%-18.3%
<b>2021</b>							
<b>Jan</b>	79	346	751	1,930,946	28,577	1.1%-1.5%	13.2%-17.5%
<b>Feb</b>	79	343	752	1,939,158	29,332	1.1%-1.5%	13.3%-17.6%
<b>Mar</b>	79	344	752	1,940,901	29,457	1.1%-1.5%	13.3%-17.6%
<b>Apr</b>	79	344	756	1,940,753	29,552	1.1%-1.5%	13.5%-17.9%
<b>May</b>	78	344	756	1,946,445	30,046	1.1%-1.5%	13.4%-17.9%
<b>Jun</b>	78	345	757	1,959,636	30,790	1.1%-1.5%	13.2%-17.6%
<b>Jul</b>	78	358	762	1,977,478	31,515	1.1%-1.5%	13.4%-17.9%
<b>Aug</b>	78	357	761	1,998,367	32,489	1.1%-1.5%	13.4%-17.9%
<b>Sep</b>	78	357	764	2,027,766	33,418	1.1%-1.5%	13.3%-17.8%
<b>Oct</b>	78	358	765	2,038,580	34,010	1.1%-1.5%	13.3%-17.8%
<b>Nov</b>	77	328	658	1,883,921	31,368	1.1%-1.5%	13.3%-17.7%
<b>Dec</b>	77	325	664	1,897,878	31,723	1.1%-1.5%	13.3%-17.6%

\* Including MFI and MDI

\*\* Including Individuals and Legal Entities

\*\*\* Revised Data

**Table 20: KHR-Denominated Checks Clearing through Clearing House**

Date	Number of Cleared Check	Number of Working Day	Number of Cleared Check Per Day	Total Amount (In Billion KHR)	Daily Average Amount (In Billion KHR)	Returned Check	
						Number	Amount (In Billion KHR)
	1	2	3 = 1/2	4	5 = 4/2	6	7
Dec-16	3,938	22	179	490.0	22.3	13	3.15
<b>Total</b>	<b>82,291</b>	<b>242</b>	<b>340</b>	<b>5,421.8</b>	<b>22.4</b>	<b>186</b>	<b>117.50</b>
Dec-17	3,074	20	154	599.0	30.0	22	12.48
<b>Total</b>	<b>37,485</b>	<b>239</b>	<b>1,885</b>	<b>6,607.8</b>	<b>333.1</b>	<b>138</b>	<b>28.51</b>
Dec-18	2,994	19	158	935.1	49.2	16	6.58
<b>Total</b>	<b>38,249</b>	<b>232</b>	<b>165</b>	<b>9,424.1</b>	<b>40.6</b>	<b>197</b>	<b>152.90</b>
<b>2019</b>							
Nov	3,584	18	199	997.0	55.4	15	1.15
Dec	3,734	21	178	1,584.1	75.4	18	11.33
<b>Total</b>	<b>41,696</b>	<b>236</b>	<b>177</b>	<b>13,602.7</b>	<b>57.6</b>	<b>206</b>	<b>630.84</b>
<b>2020</b>							
Jan	3,221	21	153	1,425.0	67.9	21	2.00
Feb	3,113	20	156	1,283.0	64.2	3	0.10
Mar	3,341	21	159	1,985.6	94.6	11	0.65
Apr	2,965	22	135	5,781.6	262.8	10	4,005.27
May	2,465	17	145	1,517.5	89.3	6	0.24
Jun	2,861	21	136	2,035.1	96.9	8	545.03
Jul	3,042	23	132	1,290.6	56.1	8	13.15
Aug	2,563	16	160	1,574.4	98.4	5	500.25
Sep	2,966	18	165	1,272.2	70.7	8	0.43
Oct	2,956	19	156	1,477.2	77.7	10	0.39
Nov	2,813	19	148	1,473.6	77.6	6	6.84
Dec	3,264	23	142	1,839.6	80.0	5	0.57
<b>Total</b>	<b>35,570</b>	<b>240</b>	<b>148</b>	<b>22,955.3</b>	<b>95.6</b>	<b>101</b>	<b>5,074.92</b>
<b>2021</b>							
Jan	2,703	19	142	1,464.0	77.1	4	1.13
Feb	2,747	20	137	1,223.1	61.2	7	5.32
Mar	3,209	22	146	2,137.0	97.1	8	1.25
Apr	1,722	17	101	1,446.2	85.1	12	343.49
May	2,616	20	131	1,677.9	83.9	6	2.51
Jun	2,676	21	127	1,673.9	79.7	7	63.13
Jul	2,501	22	114	1,548.8	70.4	4	0.98
Aug	2,717	22	124	1,600.4	72.7	7	1.20
Sep	2,636	21	126	1,488.4	70.9	7	18.26
Oct	2,421	16	151	1,433.5	89.6	7	1.23
Nov	2,773	19	146	1,633.4	86.0	16	1.07
Dec	3,028	23	132	1,763.0	76.7	14	26.86
<b>Total</b>	<b>31,749</b>	<b>242</b>	<b>131</b>	<b>19,089.4</b>	<b>78.9</b>	<b>99</b>	<b>466.43</b>

**Table 21: USD-Denominated Checks Clearing through Clearing House**

Date	Number of Checks Cleared	Number of days Cleared	Number of Cleared Check per Day	Total Amount (In Million USD)	Daily Average Amount (In Million USD)	Returned Checks	
						Number	Amount (In Million USD)
	1	2	3 = 1/2	4	5 = 4/2	6	7
Dec-16	92,820	22	4,219	2,220.4	100.9	778	44.8
<b>Total</b>	<b>1,025,209</b>	<b>242</b>	<b>4,236</b>	<b>21,790.4</b>	<b>90.0</b>	<b>8,738</b>	<b>439.6</b>
Dec-17	101,093	20	5,055	2,824.6	141.2	789	37.6
<b>Total</b>	<b>1,107,752</b>	<b>239</b>	<b>4,635</b>	<b>26,812.7</b>	<b>112.2</b>	<b>8,863</b>	<b>440.4</b>
Dec-18	111,978	19	5,894	3,917.1	206.2	904	63.6
<b>Total</b>	<b>1,238,232</b>	<b>232</b>	<b>5,337</b>	<b>41,462.7</b>	<b>178.7</b>	<b>10,474</b>	<b>2686.1</b>
<b>2019</b>							
Nov	105,249	18	5,847	6,651.0	369.5	800	3077.8
Dec	121,353	21	5,779	4,448.5	211.8	964	87.1
<b>Total</b>	<b>1,337,800</b>	<b>236</b>	<b>5,669</b>	<b>51,609.1</b>	<b>218.7</b>	<b>10,654</b>	<b>3779.9</b>
<b>2020</b>							
Jan	112,945	21	5,378	4,155.6	197.9	854	142.0
Feb	104,899	20	5,245	3,513.1	175.7	793	57.7
Mar	115,984	21	5,523	11,338.6	539.9	845	7539.5
Apr	92,572	22	4,208	3,580.9	162.8	720	447.8
May	86,011	17	5,059	2,951.1	173.6	706	64.7
Jun	95,099	21	4,529	3,602.3	171.5	656	88.9
Jul	103,633	23	4,506	3,565.0	155.0	654	27.6
Aug	85,220	16	5,326	2,819.2	176.2	575	28.0
Sep	94,576	18	5,254	3,585.4	199.2	662	209.0
Oct	95,528	19	5,028	3,337.8	175.7	616	38.0
Nov	101,894	19	5,363	3,401.5	179.0	825	49.8
Dec	111,749	23	4,859	4,369.7	190.0	714	45.0
<b>Total</b>	<b>1,200,110</b>	<b>240</b>	<b>5,000</b>	<b>50,220.0</b>	<b>209.3</b>	<b>8,620</b>	<b>8737.8</b>
<b>2021</b>							
Jan	94,741	19	4,986	3,472.2	182.7	651	34.0
Feb	91,093	20	4,555	3,581.1	179.1	559	64.9
Mar	108,132	22	4,915	4,580.6	208.2	713	29.8
Apr	51,038	17	3,002	2,481.7	146.0	653	25.0
May	83,885	20	4,194	3,665.8	183.3	727	35.9
Jun	92,036	21	4,383	4,019.5	191.4	651	33.8
Jul	90,348	22	4,107	4,022.5	182.8	610	74.4
Aug	94,597	22	4,300	3,831.2	174.1	699	40.4
Sep	92,152	21	4,388	4,057.2	193.2	546	25.0
Oct	78,639	16	4,915	3,575.0	223.4	592	30.2
Nov	95,777	19	5,041	4,091.7	215.4	1,350	59.2
Dec	104,666	23	4,551	5,002.1	217.5	672	65.5
<b>Total</b>	<b>1,077,104</b>	<b>242</b>	<b>4,451</b>	<b>46,380.6</b>	<b>191.7</b>	<b>8,423</b>	<b>517.9</b>

**Table 22: Visitor Arrivals in Cambodia**

	2021			% of Total		% Change	
	Oct	Nov	Dec	Nov	Dec	Nov/Oct	Dec/Nov
<b>(Mode of Arrival)</b>							
Phnom Penh International Airport	6,217	10,537	18,384	55.7	55.5	69.5	74.5
Kong Keng International Airport	146	124	290	0.7	0.9	-15.1	133.9
Siem Reap International Airport	0	0	1,081	0.0	3.3	0.0	0.0
Land	6,396	8,264	13,196	43.6	39.8	29.2	59.7
Boat	0	8	178	0.0	0.5	0.0	100.0
Preah Vihea	0	0	0	0.0	0.0	0.0	0.0
<b>Total</b>	<b>12,759</b>	<b>18,933</b>	<b>33,129</b>	<b>100.0</b>	<b>100.0</b>	<b>48.4</b>	<b>75.0</b>
<b>(Arrival by Purpose of Visit)</b>							
Tourist	6,159	9,229	19,322	48.7	58.3	49.8	109.4
Business and Professional	6,082	8,386	11,170	44.3	33.7	37.9	33.2
Others and not specified	518	1,318	2,637	7.0	8.0	154.4	100.1
<b>Total</b>	<b>12,759</b>	<b>18,933</b>	<b>33,129</b>	<b>100.0</b>	<b>100.0</b>	<b>48.4</b>	<b>75.0</b>
<b>(Top-Ten Countries of Passenger Arrivals)</b>							
Vietnam	1,249	4,732	8,490	25.0	25.6	2.8*	79.4
Thailand	5,451	4,441	7,493	23.5	22.6	-18.5	68.7
China (PRC)	2,594	2,604	3,380	13.8	10.2	0.4	29.8
Indonesia	518	1,345	2,336	7.1	7.1	159.7	73.7
United States of America	439	1,004	2,158	5.3	6.5	128.7	114.9
South Korea	445	1,119	1,521	5.9	4.6	151.5	35.9
France	221	469	1,328	2.5	4.0	112.2	183.2
Malaysia	359	542	752	2.9	2.3	51.0	38.7
Australia	36	195	673	1.0	2.0	4.4*	2.5*
Taiwan	384	445	582	2.4	1.8	15.9	30.8
Others	1,063	2,037	4,416	10.8	13.3	91.6	116.8
<b>Total</b>	<b>12,759</b>	<b>18,933</b>	<b>33,129</b>	<b>100.0</b>	<b>100.0</b>	<b>48.4</b>	<b>75.0</b>

*Source: Ministry of Tourism*

\* Increased in times, not in percentage (%).

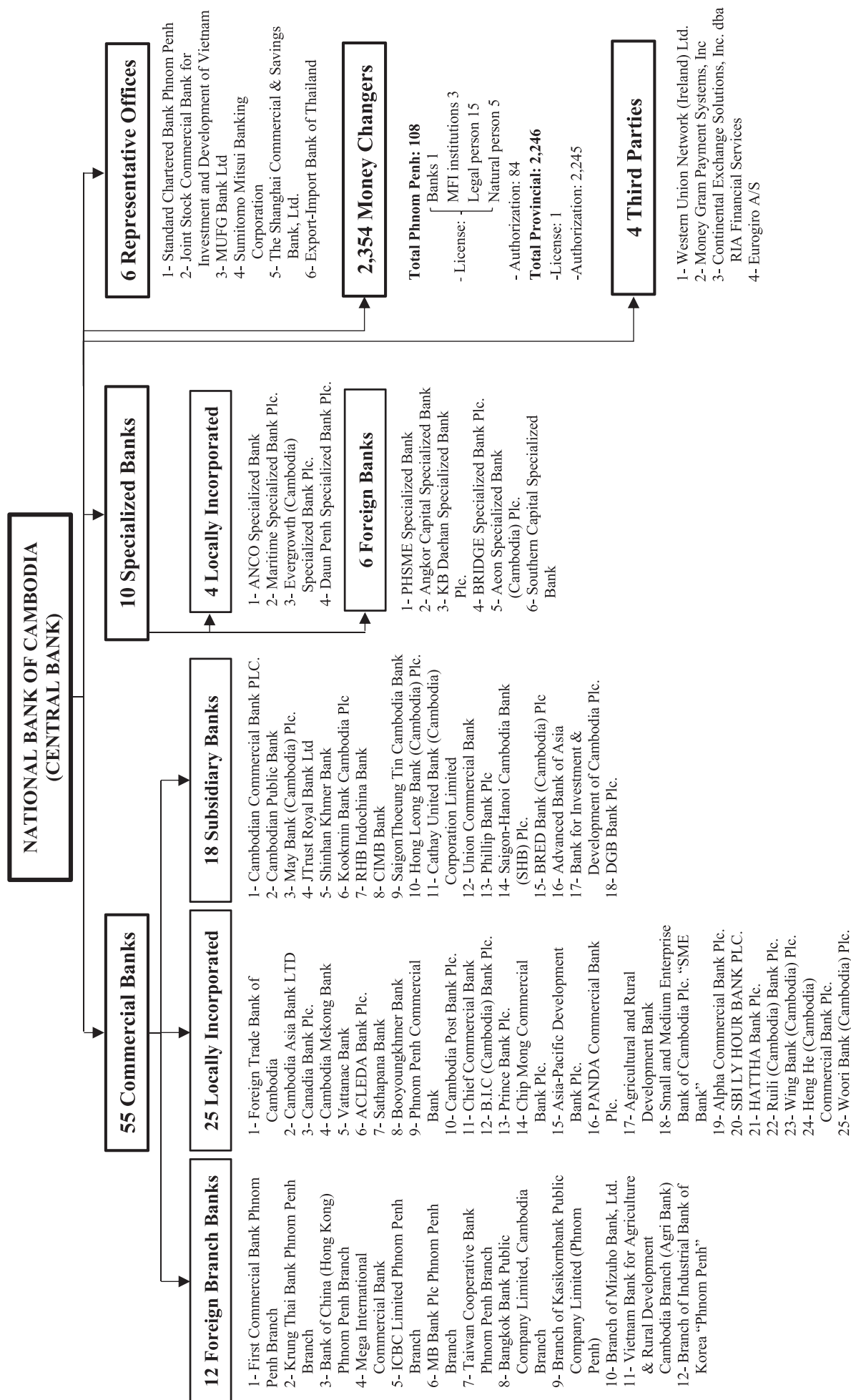
**Table 23: Cambodia's Imports and Exports**

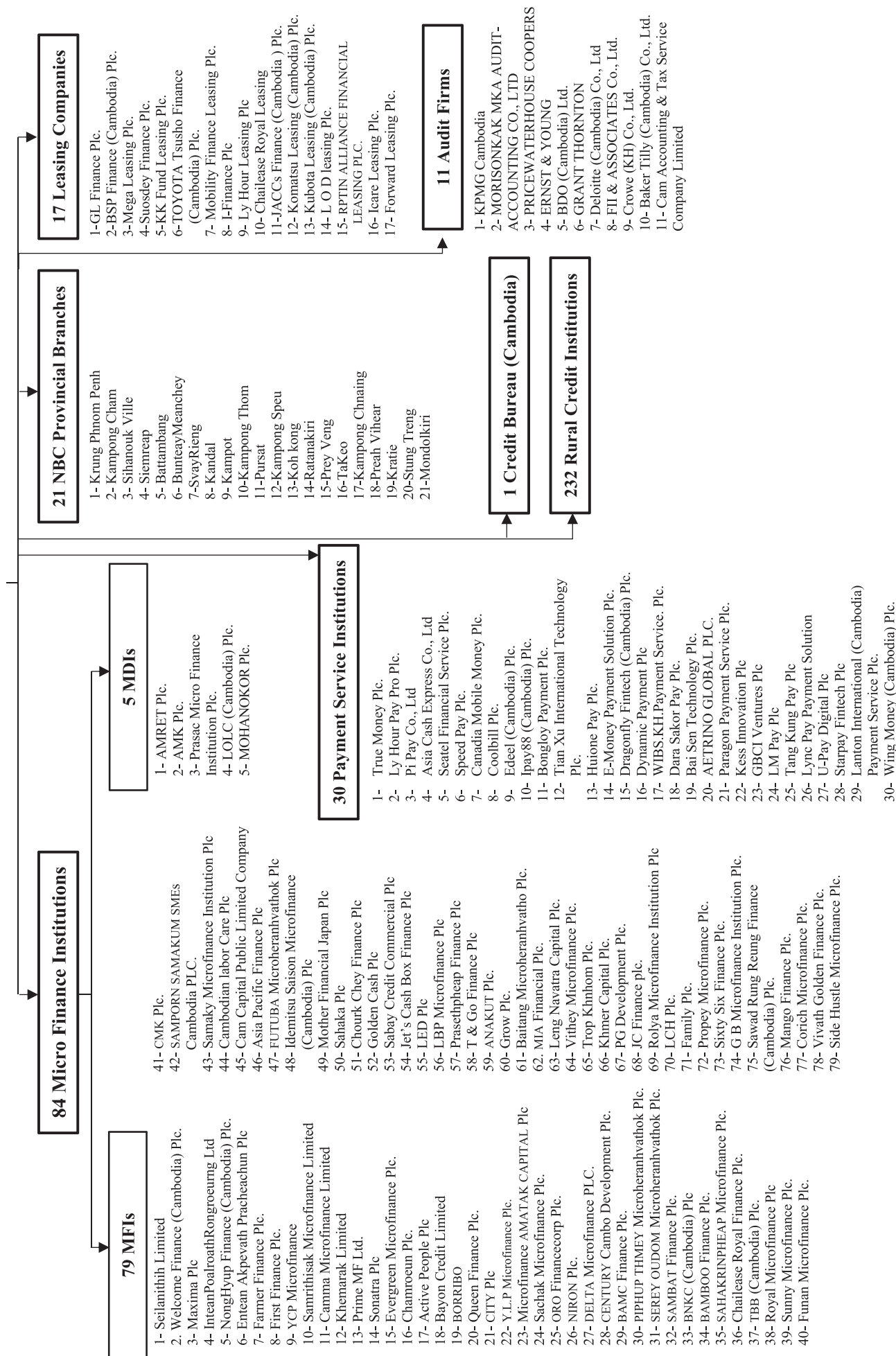
(In Billion KHR)

	2021			Change in Billion KHR		Change in %	
	Oct	Nov	Dec	Nov/Oct	Dec/Nov	Nov/Oct	Dec/Nov
<b>Imports by Commodity</b>							
Medicine	263.4	90.6	676.8	-172.8	586.2	-65.6	647.1
Cigarette	52.1	35.9	75.6	-16.2	39.7	-31.2	110.8
Food and Beverage	260.6	271.6	326.1	11.0	54.5	4.2	20.1
Equipment Construction	419.1	545.2	557.5	126.1	12.3	30.1	2.2
Cement	6.3	7.5	9.5	1.2	2.0	19.4	27.2
Steel	76.3	89.8	102.6	13.6	12.7	17.8	14.2
Phones	13.0	7.1	7.0	-5.8	-0.2	-45.0	-2.2
T.V	1.5	1.5	1.3	0.0	-0.2	-0.5	-16.2
Other Electronic Equipment	203.7	245.5	351.3	41.8	105.8	20.5	43.1
Garment	192.8	239.1	246.3	46.2	7.2	24.0	3.0
Fabric	1,782.1	1,683.7	2,010.0	-98.3	326.3	-5.5	19.4
Vehicle	470.1	505.0	620.1	34.8	115.1	7.4	22.8
Equipment of Cold	16.9	19.6	21.2	2.6	1.6	15.5	8.4
Gold	2,250.4	1,690.6	3,599.3	-559.8	1,908.7	-24.9	112.9
Oil	772.2	917.0	913.9	144.8	-3.1	18.8	-0.3
Fertilizer	120.9	79.1	72.7	-41.9	-6.4	-34.6	-8.0
Others	3,038.3	3,142.8	3,816.2	104.6	673.3	3.4	21.4
<b>Total Imports</b>	<b>9,939.8</b>	<b>9,571.6</b>	<b>13,407.3</b>	<b>-368.1</b>	<b>3,835.7</b>	<b>-3.7</b>	<b>40.1</b>
<b>Exports by Commodity</b>							
Garment	2,890.0	2,604.0	3,420.3	-286.0	816.4	-9.9	31.4
Footwear	469.6	459.2	675.6	-10.4	216.4	-2.2	47.1
Other Textile Product	708.1	664.2	927.8	-43.9	263.6	-6.2	39.7
Electrical Part	347.2	313.4	397.3	-33.8	83.9	-9.7	26.8
Vehicle and Bicycle Part	31.8	56.1	61.4	24.2	5.3	76.2	9.5
Bicycle	170.5	194.9	282.0	24.4	87.0	14.3	44.7
Wood Products	227.9	225.2	247.3	-2.8	22.1	-1.2	9.8
Rice	167.1	178.7	218.5	11.6	39.8	7.0	22.3
Rubber	166.3	169.3	207.8	3.0	38.5	1.8	22.7
Fish and Other Agricultural Products	53.3	90.3	123.3	37.0	32.9	69.4	36.5
Others	916.0	914.9	944.4	-1.1	29.5	-0.1	3.2
<b>Total Exports</b>	<b>6,147.9</b>	<b>5,870.1</b>	<b>7,505.5</b>	<b>-277.7</b>	<b>1,635.4</b>	<b>-4.5</b>	<b>27.9</b>

*Source: General Department of Cambodia Customs and Excise**\* Revised Data*

**Table 24: THE BANKING SYSTEM IN CAMBODIA**  
As of 31 December 2021





**អ៊ីនធឺណិត**  
**INTERNET**

: [www.nbc.org.kh](http://www.nbc.org.kh) គឺជាគេហទំព័ររបស់ធនាគារជាតិនៃកម្ពុជា ។ ទិន្នន័យថ្មីៗក្នុងគេហទំព័រ និងទិន្នន័យបន្តបន្ទាប់ទៀត ត្រូវបាននិងកំពុងដាក់បញ្ចូលទៅក្នុងប្រព័ន្ធទិន្នន័យ តាមធនធាន ដែលមាន ។ លើសពីនេះទៀត គេហទំព័រនេះ គឺជាទីតាំងដ៏ល្អបំផុតដើម្បីទទួលបានទិន្នន័យសង្ខេប នៃការចេញផ្សាយចុងក្រោយបង្អស់ ។

[www.nbc.org.kh](http://www.nbc.org.kh) is the National Bank of Cambodia website. The website new data and metadata are progressively being added to the database, as resources permit. This website is the best place to start for access to summary data from the latest publications.

**សេវាព័ត៌មាន**  
**INFORMATION SERVICE**

: បុគ្គលិករបស់នាយកដ្ឋានស្ថិតិ នៃធនាគារជាតិនៃកម្ពុជា អាចជួយចង្អុលបង្ហាញ ឬណែនាំ អ្នកប្រើប្រាស់ក្នុងការស្វែងរកទិន្នន័យតាមតម្រូវការ ។ ការបោះពុម្ពផ្សាយរបស់ធនាគារជាតិនៃកម្ពុជា អាចរកជាប់បាន ហើយសេវាលើការជាប់ជាប្រចាំក៏អាចរៀបចំបានដែរ ។ ចំពោះសេវាលើទិន្នន័យ ពិសេសផ្សេងទៀតក៏អាចរកបានផងដែរ តាមរយៈការមកជាប់ព្រឹត្តិបត្រដោយផ្ទាល់ ។

The Statistics Department staff of the National Bank of Cambodia can assist users in addressing their data requirements. The National Bank of Cambodia publications are available for sale and subscription services can be arranged. Other special data services are also available, on a user pays basis.

**អាសយដ្ឋានទំនាក់ទំនង**  
**CONTACT DETAILS**

**ធនាគារជាតិនៃកម្ពុជា**

NATIONAL BANK OF CAMBODIA

នាយកដ្ឋានស្ថិតិ

Statistics Department

អគារលេខ ៦៩-៧០ មហាវិថីហាណូយ (លេខ១០១៩) ភូមិបាយ៉ាប សង្កាត់ភ្នំពេញថ្មី

ខណ្ឌសែនសុខ រាជធានីភ្នំពេញ

#69-70, Hanoi Blvd. (1019), Phum Bayab, Sangkat Phnom Penh Thmei, Cambodia

អ៊ីម៉ែល : [statistics@nbc.org.kh](mailto:statistics@nbc.org.kh)

E-mail : [statistics@nbc.org.kh](mailto:statistics@nbc.org.kh)

ទូរស័ព្ទ : (៨៥៥) ២៣ ៧២២ ៥៦៣ – ១១១៥

Telephone: (855) 23 722 563 – 1115

ទូរសារ : (៨៥៥) ២៣ ៤២៦ ១១៧

Facsimile : (855) 23 426 117



ISSN 2074-5680

**ផលិតដោយ ធនាគារជាតិនៃកម្ពុជា**

Produced by the National Bank of Cambodia